

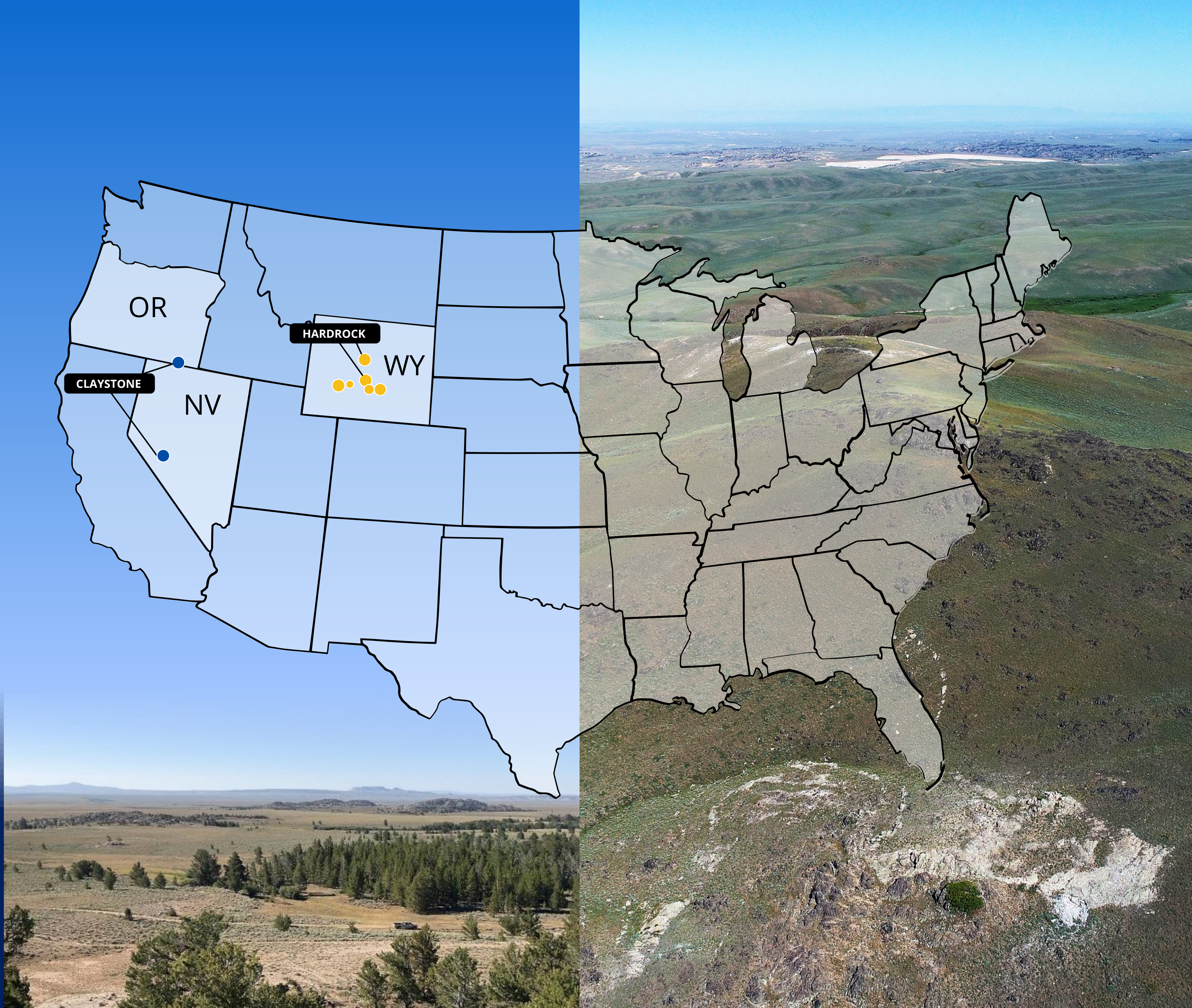


CHARIOT
CORPORATION

Investor Presentation

October 2024

ASX: CC9



Investment Highlights



Investment Highlights

1 Black Mountain Pilot Mine near term

- Black Mountain has high grade spodumene mineralisation at surface – i.e. could support shallow-open pit mining
- Wyoming has a streamlined Small-Mine Permit system
- Black Mountain is near U.S. lithium hydroxide refinery developments

2 Black Mountain large-scale mining long-term

- First three (3) diamond drill holes at Black Mountain have intersected near surface, high-grade spodumene mineralisation
- Best result 15.48m @ 1.12% Li₂O from 2.74m, including 4.27m @ 2.46% Li₂O from 9.94m
- Total of seven (7) hard rock lithium projects in Wyoming with 795 claims covering 6,297 ha (including Black Mountain)

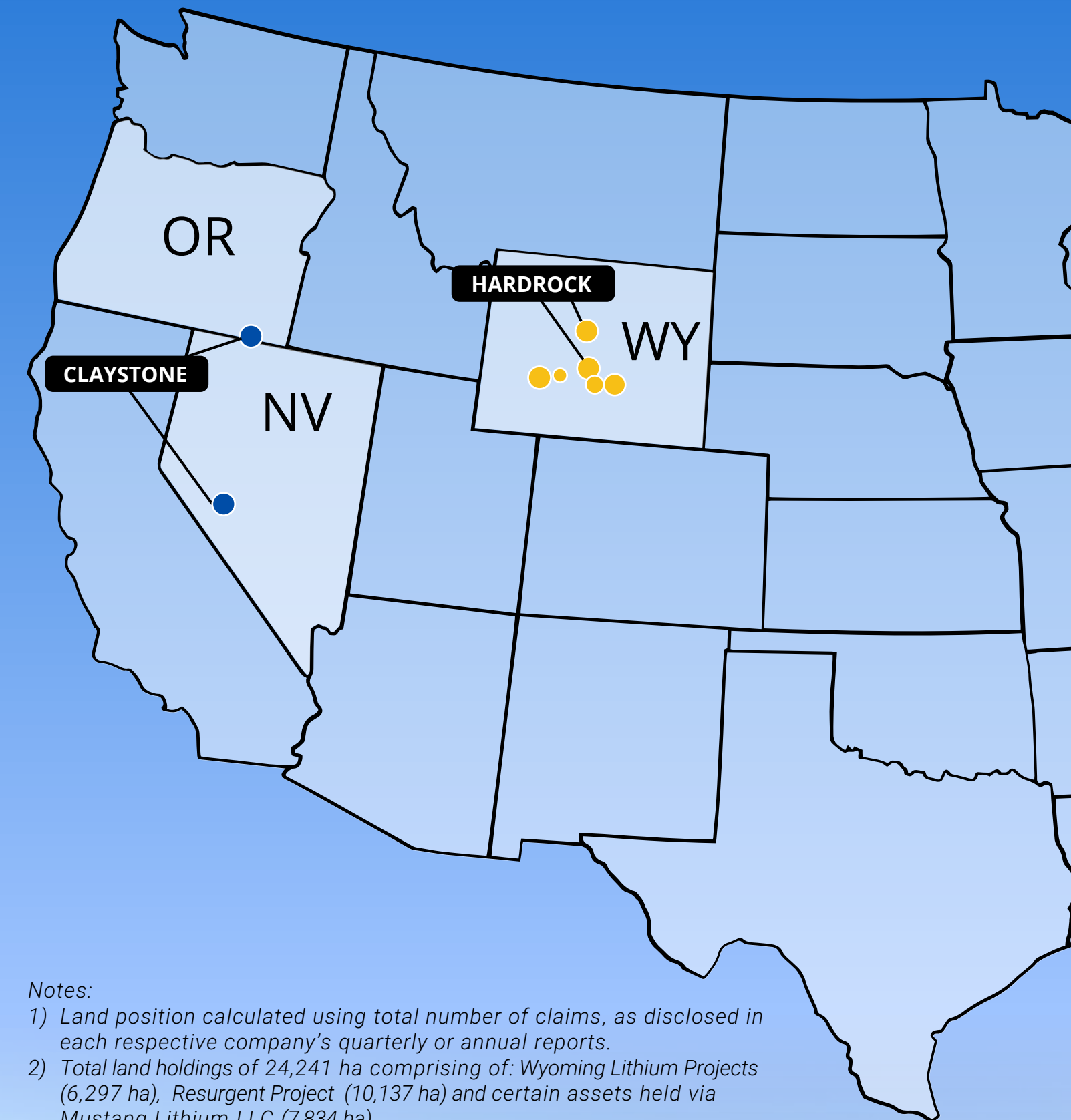
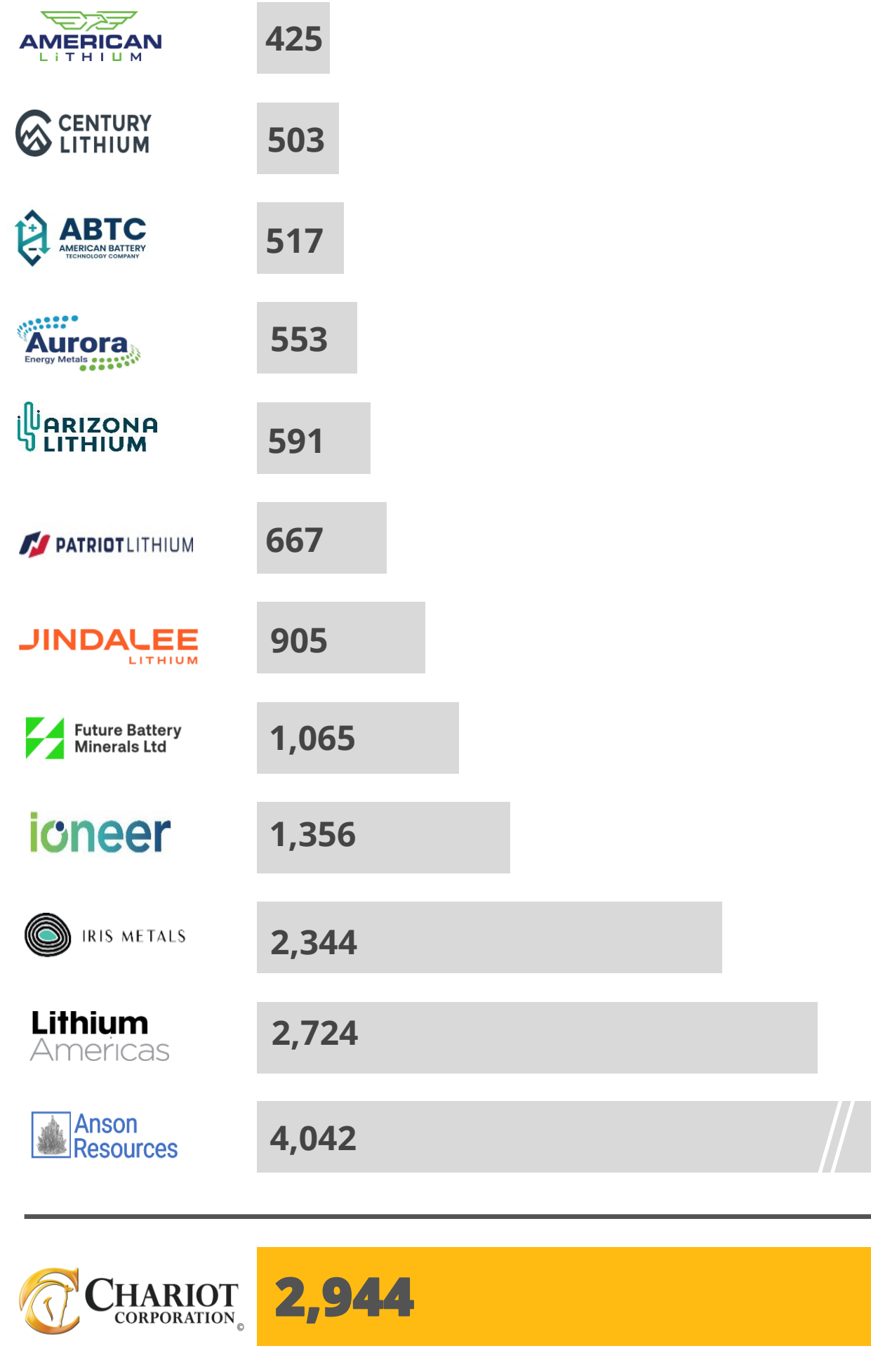
3 Resurgent Claystone Lithium Project

- Resurgent is another core project and the 2nd largest land position in the McDermitt Caldera, Nevada
- The McDermitt Caldera hosts the two largest lithium resources discovered to-date (Thacker Pass has 19.1mt LCE and McDermitt has 21.5mt LCE)³
- Highest grade surface sample at Resurgent of 3,865 ppm Li and 20 surface samples at Resurgent with values greater than 1,000 ppm Li
- The U.S. DOE & General Motors conditionally committed a combined total of US\$3.2b to develop the Thacker Pass Project

4 Horizon Claystone Lithium Project

- Maiden mineral resource estimate of 1.3 million tonnes LCE indicated and 8.8 million tonnes LCE inferred⁴
- The projects neighbour American Lithium Corp.'s (TSX-V: LI) TLC project (MRE 10.69 Mt LCE) and American Battery Technology Company's (NASDAQ: ABAT) Tonopah Flats project (MRE 18.63 Mt LCE)
- Potential monetisation of Horizon

Lithium Companies U.S. Landholdings¹



Notes:

- 1) Land position calculated using total number of claims, as disclosed in each respective company's quarterly or annual reports.
- 2) Total land holdings of 24,241 ha comprising of: Wyoming Lithium Projects (6,297 ha), Resurgent Project (10,137 ha) and certain assets held via Mustang Lithium LLC (7,834 ha).
- 3) Refer to Lithium Americas Thacker Pass Feasibility Study NI43-101 dated 2 November 2022 and Jindalee Lithium Limited company announcement dated 27 February 2023.
- 4) Refer to Chariot's ASX announcement dated 4 September 2024.



North American Lithium Demand and IRA-compliant Supply¹



Majority of current & near-term lithium supply is contracted to China and/or uneconomic to ship to U.S., leaving the U.S. short of Inflation Reduction Act (IRA)-compliant lithium

Demand

Base: Benchmark Minerals North American Base Demand

Mid: Average of Base and High

High: Benchmark Minerals North American High Demand

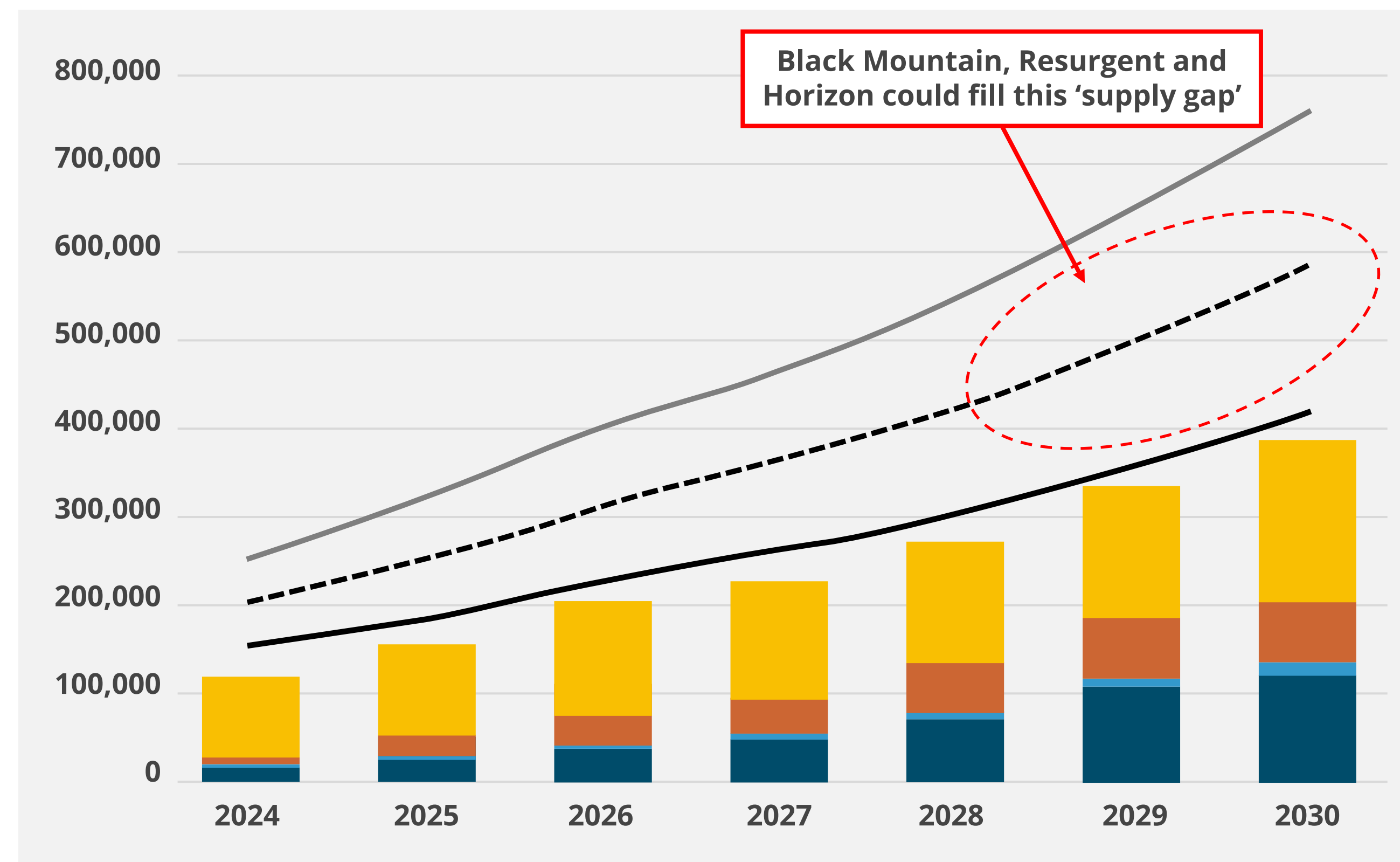
Supply

Domestic: Operating, highly probable, and probable Benchmark Minerals data weighted for U.S.A. domestic production

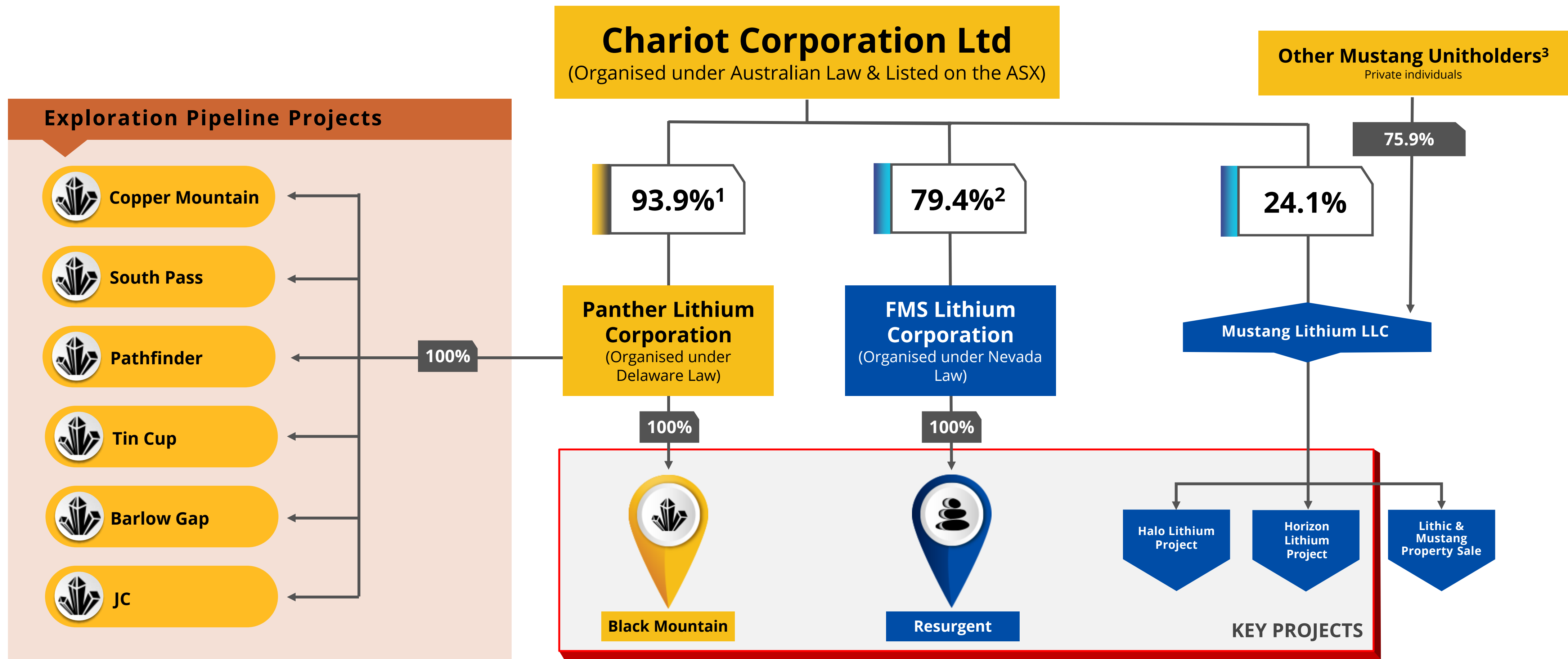
IRA Realistic: IRA compliant supply operating, highly probable and probable that is available to the U.S. (Excluding supply to China and Europe)

Legend

- Lithium Hydroxide Supply Domestic USA
- Lithium Carbonate Supply Domestic USA
- Lithium Hydroxide Supply IRA - Realistic
- Lithium Carbonate Supply IRA - Realistic
- North America Demand - Base
- North America Demand - Mid
- North America Demand - High



Corporate Structure



Notes:

- 1) Chariot holds a 93.9% interest in Wyoming Lithium Pty Ltd, which holds a 100% interest in Panther Lithium Corporation.
- 2) Chariot holds a 45.3% direct interest in FMS Lithium Corporation ("FMSL") and a 34.1% beneficial interest in FMSL is through (a) 100% interest in Metroview Holdings Pty Ltd, Pierview Holdings Pty Ltd, IDEVELOP WA Pty Ltd and BGA Chariot Pty Ltd, which combined, holds a 4.2% direct interest in FMSL, and (b) 82.6% interest in Rosepoint Holdings Pty Ltd, which holds a 36.2% direct interest in FMSL (29.9% beneficial interest).
- 3) 24.2% of Mustang Lithium LLC's membership interest is held by Chariot directors Shanthar Pathmanathan and Fred Forni.

Corporate Overview



CC9

ASX ticker

\$2.6m

Cash on hand¹

\$0.28

Share price²

158.4m

Shares on issue³

23.0m

Options on issue³

5.6m

Performance rights⁴



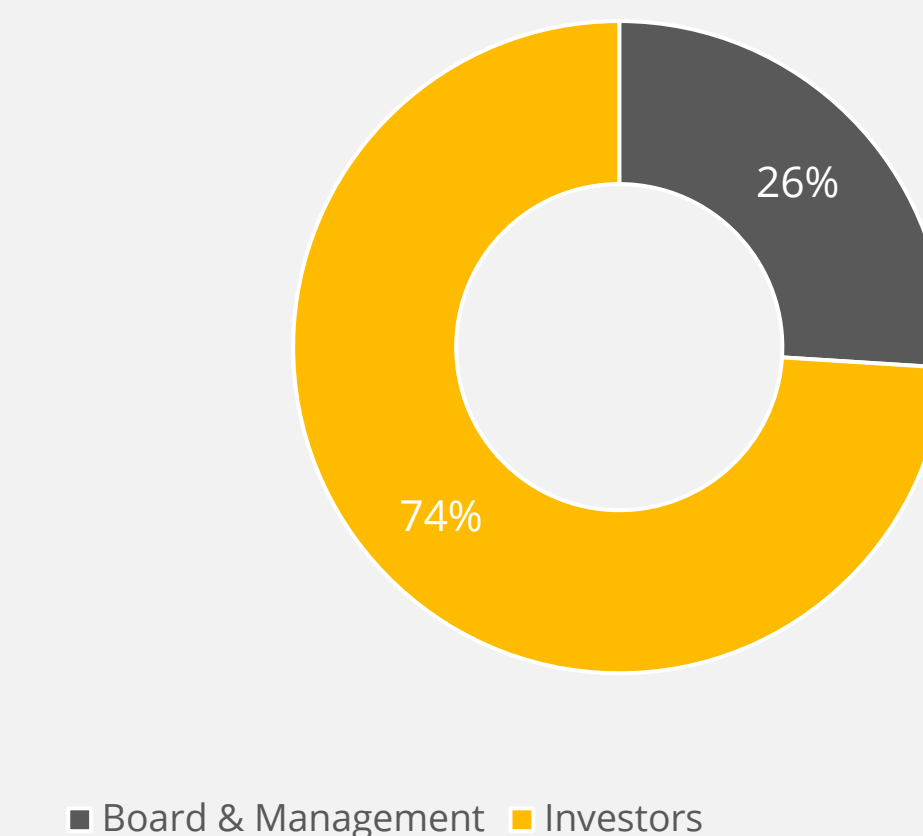
Notes:

- 1) Pro forma cash estimate and subject to the settlement of a \$1.618m placement expected on 25/10/2024.
- 2) As of 18/10/2024
- 3) Pro forma and subject to the settlement of a \$1.618m placement expected on 25/10/2024.
- 4) 5.6m performance rights to directors Frederick Forni and Neil Stuart, Ramesh Chakrapani and Trinity Cooper.

Options on Issue³

Options	Exercise Price	Expiry
4,890,667	\$0.25	31/12/2024
771,000	\$0.52	23/12/2024
1,000,000	\$0.585	27/10/2025
62,500	\$0.30	07/06/2026
62,500	\$0.60	07/06/2026
100,000	\$0.90	07/06/2026
150,000	\$1.20	07/06/2027
375,000	\$1.50	07/06/2027
7,795,000	\$0.30	17/10/2025
7,795,000	\$0.35	17/10/2026

Shareholder Overview

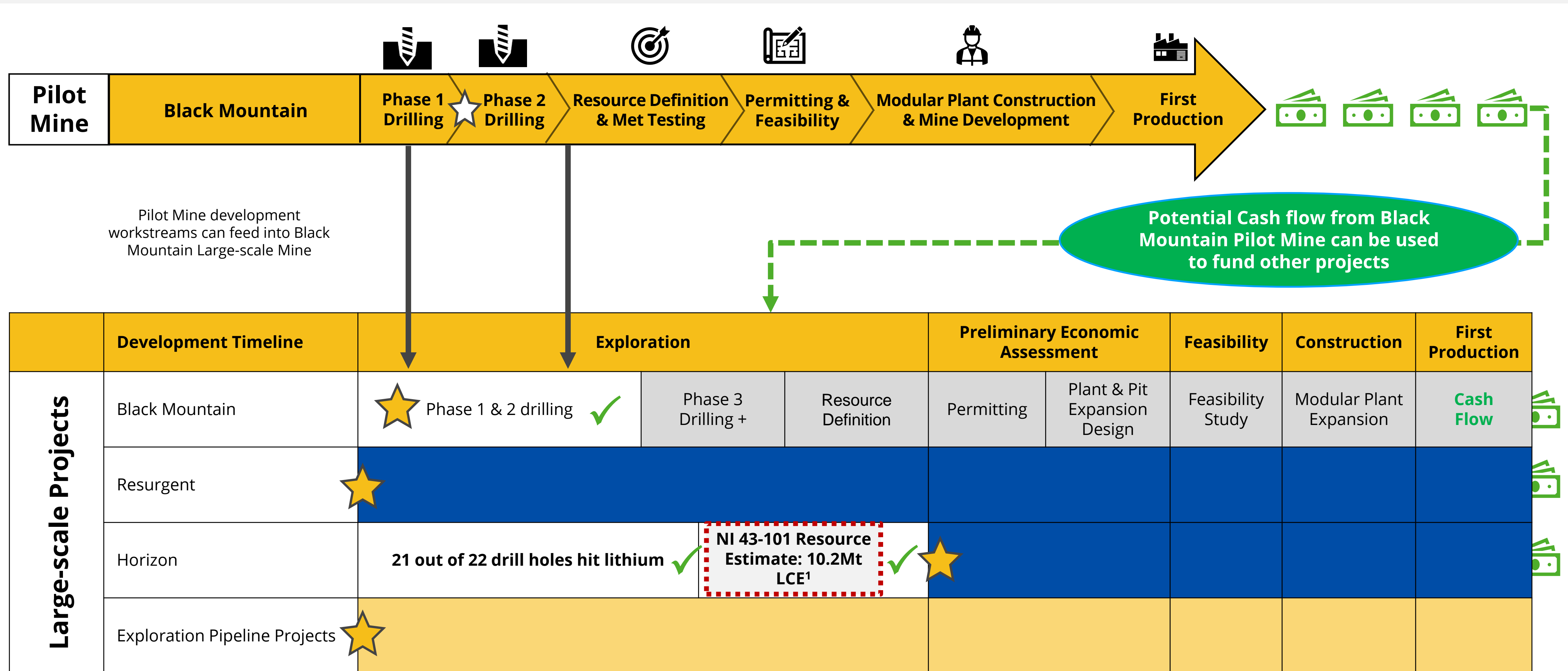


Key Projects Ranking



Key Projects Ranking:	1	2	3	4	5	6
Project	Black Mountain - Pilot Mine	Black Mountain - Large Scale	Resurgent North	Resurgent East	Horizon	Other Wyoming Projects
Location	Wyoming, U.S.A.	Wyoming, U.S.A.	Oregon, U.S.A.	Nevada, U.S.A.	Nevada, U.S.A.	Wyoming, U.S.A.
Lithium Mineralisation Type	Hard Rock Lithium	Hard Rock Lithium	Claystone	Claystone	Claystone	Hard Rock Lithium
Exploration Status	Drilled	Drilled	Surface-sampled	Surface-sampled	Drilled and Foreign NI 43-101 Mineral Resource Estimate completed	Surface-sampled
Potential for Near-Term Cash Flow	✓✓✓	✗	✗	✗	✓✓	✗
Large-scale Resource Potential	Small-scale resource to be defined in short-term	✓✓✓	✓✓✓	✓✓✓	1.3 million tonnes LCE indicated and 8.8 million tonnes LCE inferred ¹	✓
Next steps	Resource-drilling & process engineering	Pilot Mine to inform large-scale development	Phase 1 drilling	Phase 1 drilling	Potential sale/monetization	Phase 1 drilling

Indicative Project Development Timelines



★ Denotes current progress of relevant project

Notes:

1) Pan American Energy Corp. announced a maiden Mineral Resource estimate on 20 November 2023. On 4 January 2024, Pan American Energy filed a technical report pursuant to National Instrument 43-101 – Standards of Disclosure for Mineral Projects (“NI 43-101”) entitled “NI 43-101 Technical Report for the Horizon Lithium Project” with an effective date of December 21, 2023. Neither Chariot nor Mustang Lithium LLC has independently verified the information relating to the Horizon NI 43-101 Mineral Resource Estimate.

Leadership and Exploration Team



Shanthar Pathmanathan
Managing Director

- Prior CEO and MD of Lithium Consolidated Ltd, which had one of the largest portfolios of hard rock lithium exploration assets, globally.
- 14 years investment banking experience in the metals and mining, oil and gas and chemicals sectors.
- Previous VP with Deutsche Bank's investment banking division and held investment banking and principle investment roles with Macquarie Group.



Frederick Forni
Executive Director

- Senior finance professional with over 25 years of investment banking experience.
- Prior Senior Managing Director of Macquarie Holdings (USA) Inc.
- Holds a B.A. in Economics from Connecticut College, a J.D., from Georgetown University Law Center.



Neil Stuart
Non-Executive Director

- Prior founding Director and Chairman of Orocobre Limited, now Arcadium Lithium (ASX: LTM) post-merger with Galaxy Resources Limited and Livent Corporation.
- 50 years exploration experience, 20 of which were involved with the exploration and commercial development of lithium projects.



Ramesh Chakrapani
Chief Strategy Officer

- Over 20 years of experience in the investment banking and alternative asset investing space including over 15 years at The Blackstone Group where he was a Managing Director
- Represented The Blackstone Group on the boards of selected investments
- Diverse set of industries, asset classes, geographies, and liquidity profiles

Exploration Team



Edward Max Baker
Geological Consultant

- Ph.D. Geologist and a fellow AusIMM.
- Over 50 years of experience, working across multiple continents and commodities, including tin-tantalum pegmatites.
- Prior Chief Geologist at Newcrest during the discovery and development phases of the Cadia and Gossowong deposits.
- Previously VP Exploration for Integra Resources Corp.



David Trabert
Project Manager

- Exploration Geologist with over 30 years of experience working in mineral exploration and oil & gas development.
- AngloGold Ashanti country manager between 2001 & 2004.



Kifor Muroff
Exploration Geologist

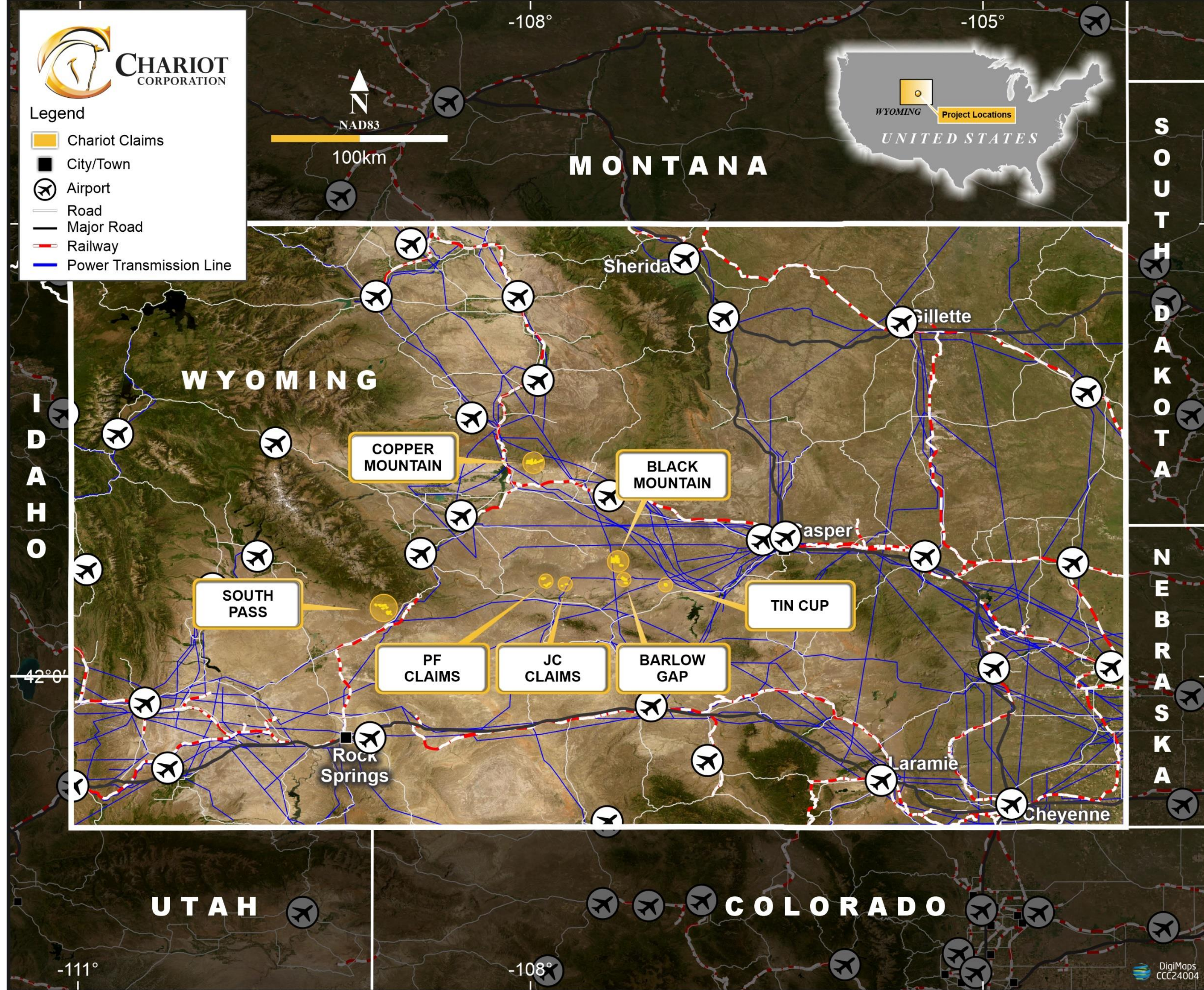
- Exploration geologist with several years of experience in both hard rock and clastone lithium.



Wyoming Hard Rock

Why Wyoming?

- 1
Tier 1 Mining District
- Proximity to Refineries and Battery Plants**
- No Material Land Use Restrictions**
- Supportive Policy & Strong Legal Framework**
- Extensive Road and Rail Infrastructure**
- Highly Prospective Geology**



Wyoming Hard Rock Lithium Projects

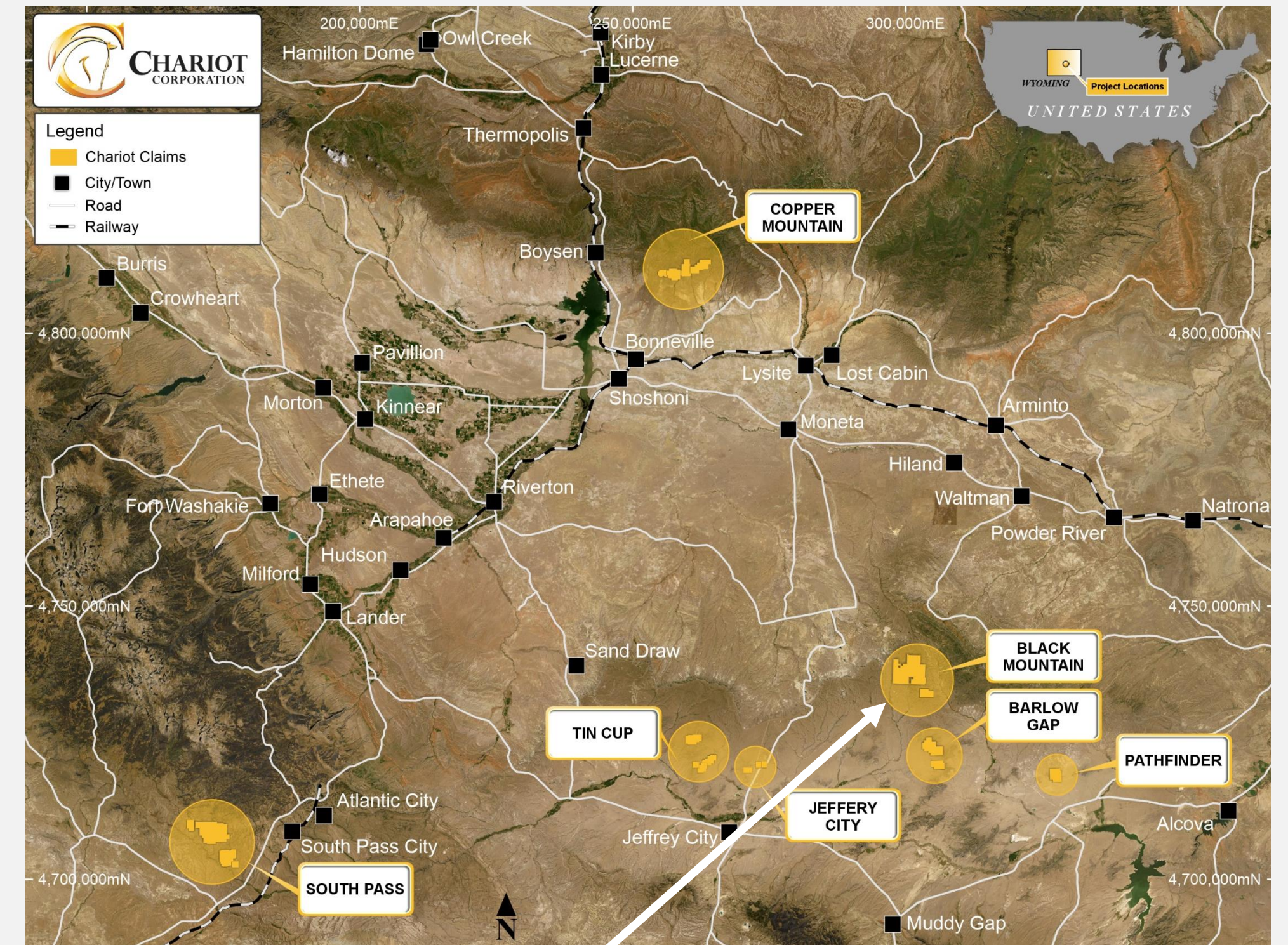


The Next U.S. Hard Rock Lithium Province

- Chariot has seven (7) lithium exploration projects in Wyoming, covering a total of 6,296 hectares:
 - Black Mountain (6,632 acres or 2,684 ha)
 - Copper Mountain (1,628 acres or 659 ha)
 - Tin Cup (929 acres or 376 ha)
 - Jeffrey City (185 acres or 75 ha)
 - Barlow Gap (1,238 acres or 501 ha)
 - Pathfinder (578 acres or 234 ha)
 - South Pass (4,366 acres or 1,767 ha)

Wyoming is a Mining Friendly state

- Long history of coal and uranium mining with a ranking of 9th in the 2023 Fraser Institute's Policy Perception Index. Resources is the largest contributor to state economy (21% of 2019 GSP)¹
- Limited challenges from national parks, national monuments or urban areas. Although Wyoming is the 10th largest state by land mass, it has the smallest state population (<600,000)²
- Wyoming's small-mine permit system offers a pathway for the establishment of a pilot mine



Notes:

- Sourced from Statewide Freight Assessment: Wyoming 2022
- Sourced from the United States Census Bureau

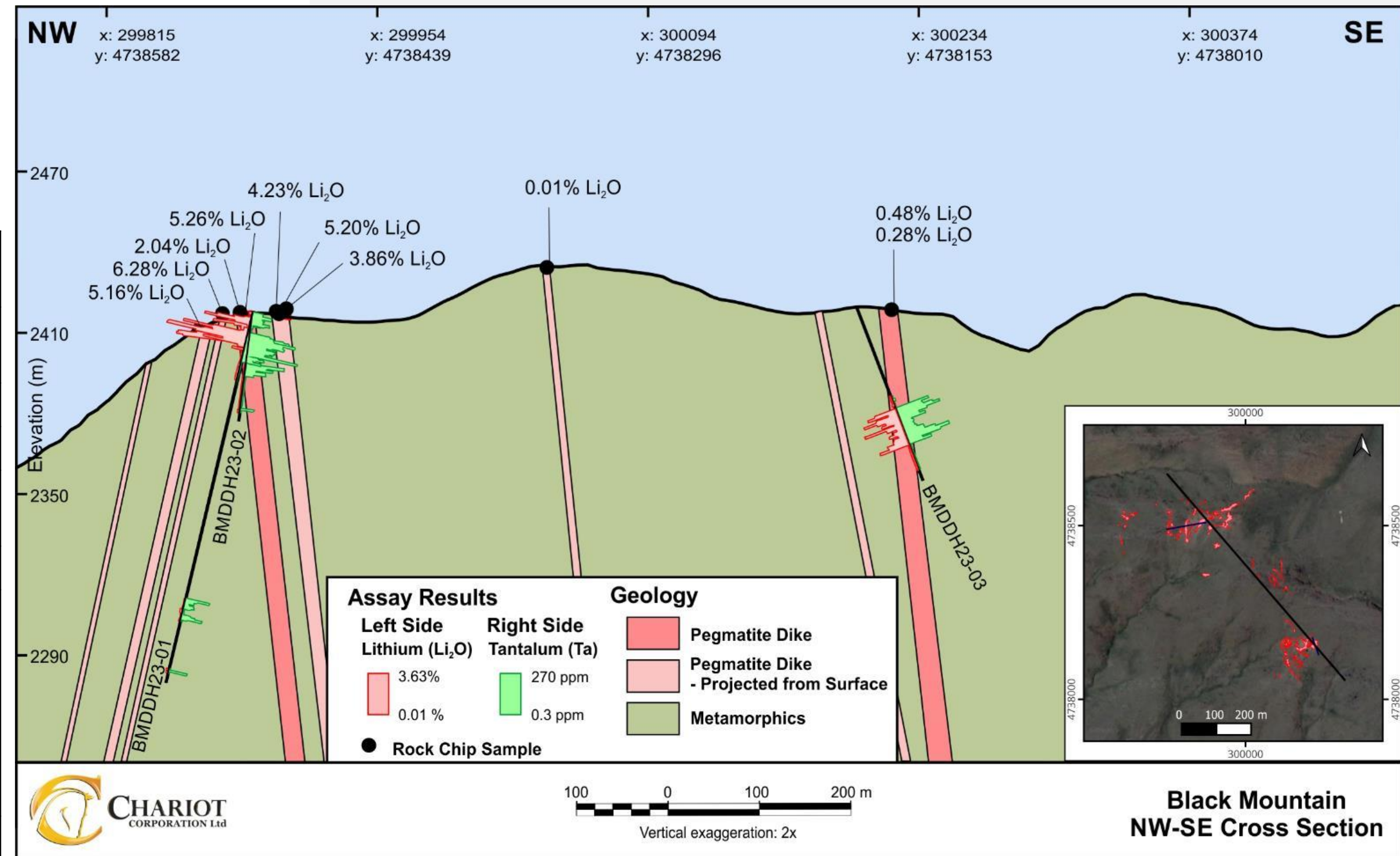
Black Mountain



Historical Exploration & Phase 1 Drilling Results

- Initial rock chip sampling results yielded up to 6.68% lithium oxide (Li₂O)
- Phase 1 diamond drilling program completed in February 2024 with 1st 3 diamond drill holes intersecting **near surface, high-grade** spodumene mineralisation

Drill Hole	From (m)	To (m)	Interval (m)	Li ₂ O%	Ta ₂ O ₅ ppm
BMDDH23_01	2.74	18.23	15.48 (14*)	1.12	78.8
including	4.15	5.49	1.34	1.91	68.0
and	9.94	14.2	4.27	2.46	128.4
BMDDH23_02	1.83	16.15	14.33 (13*)	0.84	61.3
including	10.67	12.95	2.29	3.09	137.7
BMDDH23_03					
Includes 2.29m of core loss between 45.26m and 47.55m	45.26	62.73	18.81 (8*)	0.85	98.4
including	47.55	53.34	5.79	1.08	104.9

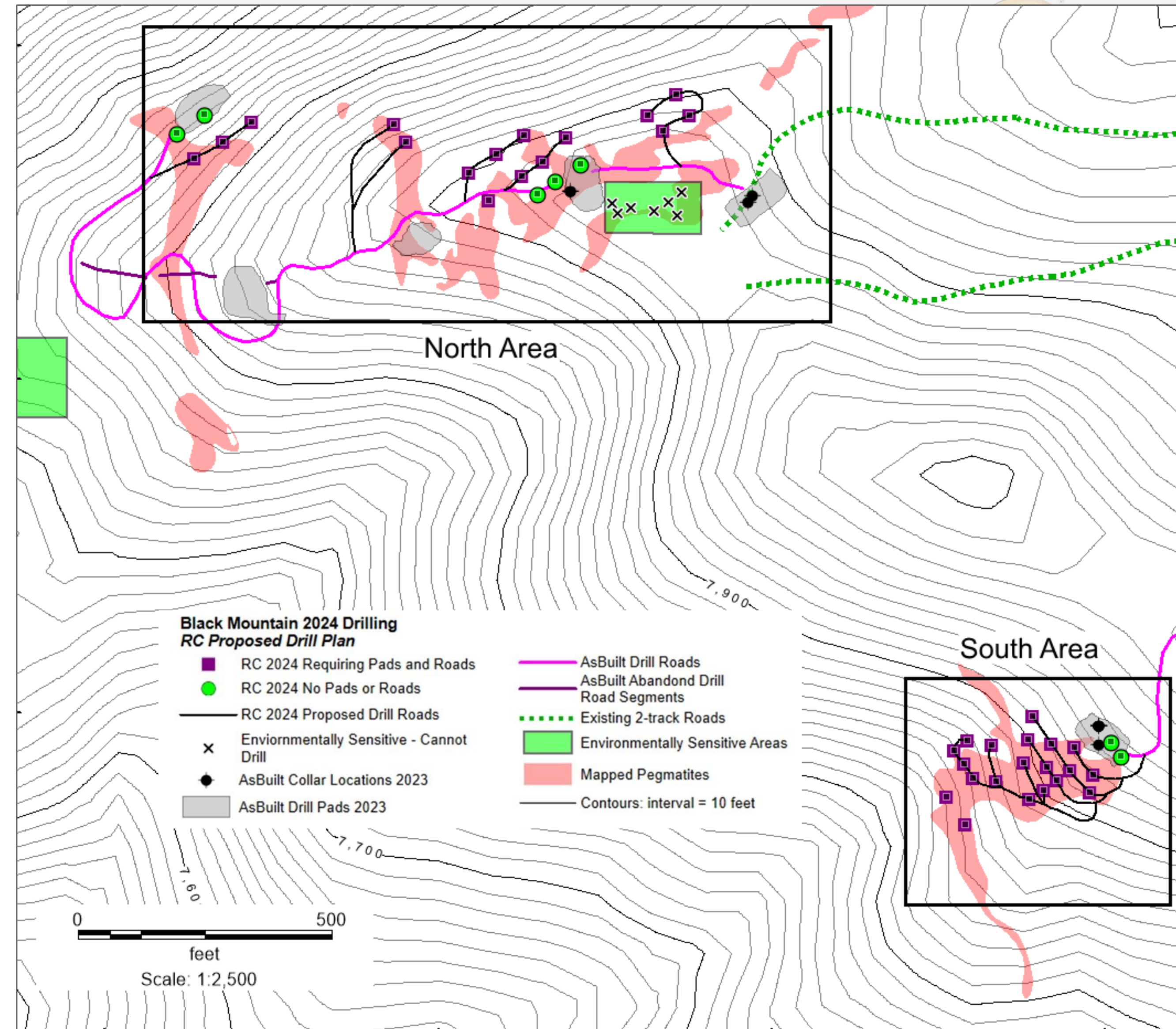


Black Mountain



Phase 2 Drilling Program

- The Phase 2 Drilling program to be completed soon under the current permit, which allows a 5-acre disturbance area
- Phase 2 Drill program objectives are to:
 1. Quickly and cost-effectively identify a small lithium resource to support establishment of a Pilot Mine
 2. Improve understanding of the mineral deposits to help plan for larger mining operations in the future
- Drilling will be focussed on 2 areas with lithium-pegmatite formations visible at the surface
- Previous drilling in this area already found lithium near the surface
- The program will include up to 43 drill holes reaching a total depth of up to 4,300m
- Reverse circulation (RC) drilling will be used, given it is a quick and cost-effective method with minimal environmental impact

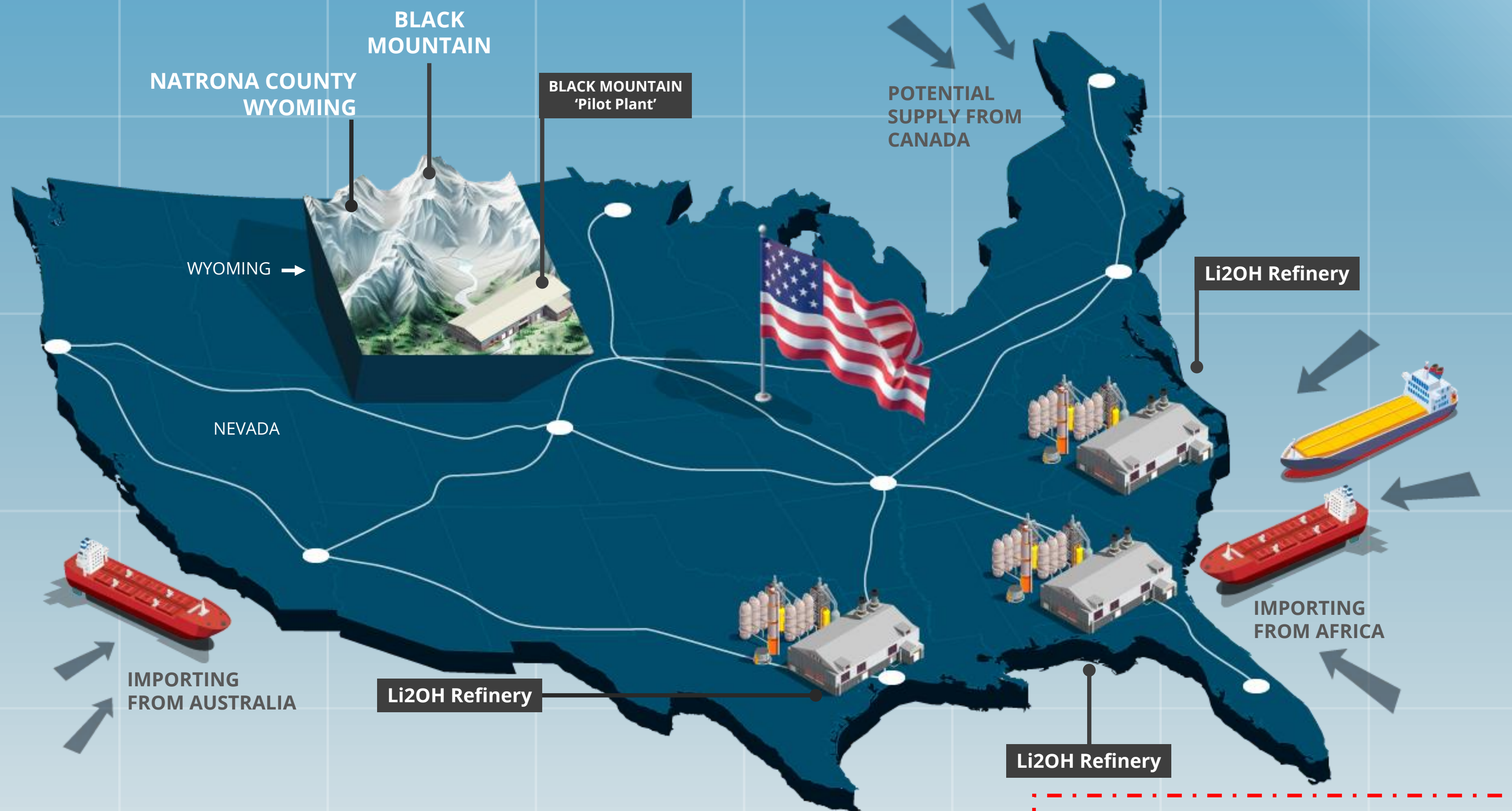


Notes:

- 1) See Chariot's ASX announcement dated 2 February 2024 and 20 August 2024.
- 2) See Chariot's ASX announcement dated 2 February 2024.



Black Mountain provides a potential fast-to-market solution to supply the future U.S. lithium hydroxide refineries with spodumene concentrate



Conceptual diagram to illustrate Black Mountain Pilot Mine strategy

Black Mountain Pilot Mine

Key Drivers

- 1. High-grade lithium mineralisation ✓ ✓
- 2. Quarry-size open-pit mine ✓
- 3. Modular & scalable plant ✓
- 4. Wyoming's small-mine permit system ✓ ✓
- 5. Supply products to USA offtake facilities ✓
- 6. Leverage existing infrastructure and local personnel ✓
- 7. Pilot Mine may de-risk future larger-scale mine development ✓ ✓

Notes:
1) The map is solely for illustrative purposes and should not be relied upon for accuracy or realistic representation.

Black Mountain Pilot Mine: Strategy



Key Driver	Strategy	Implications
1. High-grade lithium mineralisation	<ul style="list-style-type: none"> Leverage previous drilling results – which indicated high-grade lithium mineralization starting at surface and encountered as deep as 45.3m below surface Complete a reverse circulation (RC) drilling program in late 2024 - early 2025 	<ul style="list-style-type: none"> Quickly and cost-effectively define a small-scale lithium resource Rapid penetration rates achieved by RC drilling should quickly determine suitability of resource for Pilot Mine concept
2. Quarry-size open-pit mine	<ul style="list-style-type: none"> Shallow open-pit mining suited to mineralisation at or near surface 	<ul style="list-style-type: none"> Shallow open pit mining is the only feasible method Lowers mining costs Drilling, blasting and mining of pegmatite dykes can be demonstrated and improve future dilution
3. Modular & scalable plant	<ul style="list-style-type: none"> On site processing with modular plant design 	<ul style="list-style-type: none"> Lowers construction and transportation costs Scalable modular processing plant for capital efficient expansion(s) Proven technology 200 kg of mineralized HQ drill core in storage in Wyoming to be transported to Perth for metallurgical testing Leverage Western Australia and South African plant engineering and fabrication expertise
4. Wyoming's small-mine permit system	<ul style="list-style-type: none"> Permitting process Engage with Federal, state and county regulators 	<ul style="list-style-type: none"> Suitable for projects like Black Mountain with near surface mineralisation No limits on mineral volume extraction Annual limits on the mining activities to 10 acres (4.05 hectares) of disturbance and 35,000 cubic yards (26,760 cubic metres) of overburden removal
5. Supply products to USA offtake facilities	<ul style="list-style-type: none"> Negotiate offtake contracts 	<ul style="list-style-type: none"> Black Mountain's proximity to U.S. lithium hydroxide refineries currently under construction in the southern United States is expected to provide a geographic advantage in marketing product extracted from the Pilot Mine
6. Leverage existing infrastructure and local personnel	<ul style="list-style-type: none"> Utilize local infrastructure and personnel (where possible) 	<ul style="list-style-type: none"> With minimal site infrastructure, major local, state and federal infrastructure can be readily accessed
7. Pilot Mine may de-risk future larger-scale mine development	<ul style="list-style-type: none"> Data from Pilot Mine can facilitate large-scale mine development 	<ul style="list-style-type: none"> Small-scale lithium resource definition can lead to larger-scale resource definition Improved understanding of project geology and grade control requirements to enhance future larger-scale development

Black Mountain Pilot Mine: Project Execution Sequencing



Key Driver	Workstreams	Indicative Sequencing							
		1	2	3	4	5	6	7	8
1. High-grade lithium mineralisation	Phase 2 Drilling Program								
	Small-scale Lithium Resource Definition								
2. Quarry-size open-pit Mine	Mine Development								
	Metallurgical testing								
3. Modular & scalable plant	Plant & Process Engineering								
	Feasibility Study								
	Detailed Design								
	Plant Construction								
	Permitting								
4. Wyoming's small-mine permit system	Baseline Studies								
	Offtake Agreements								
5. Supply products to USA offtake facilities	Commissioning/ Production								
6. Commissioning/ Production									

Black Mountain Pilot Mine: Advisors



METS Engineering Group Pty Ltd



ERM Australia Consultants Pty Ltd - (formerly CSA Global) and ERM Sustainable Mining Services ("ERM")

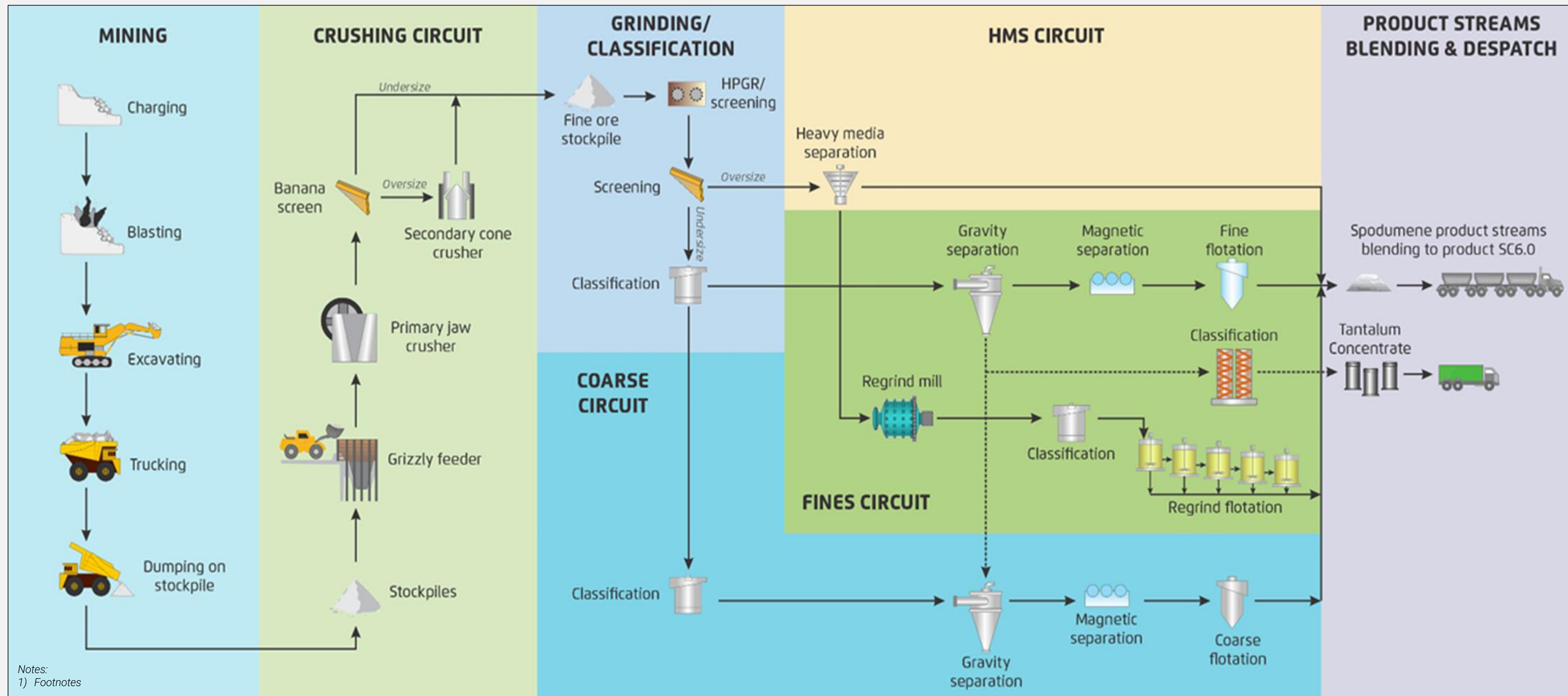


Crowley Fleck Lawyers

Metallurgical Testing Laboratory - Discussions in progress

Permitting Specialists - Discussions in progress

Black Mountain Pilot Mine: Illustrative Process Flowsheet





Resurgent Project

Resurgent Project¹

Overview

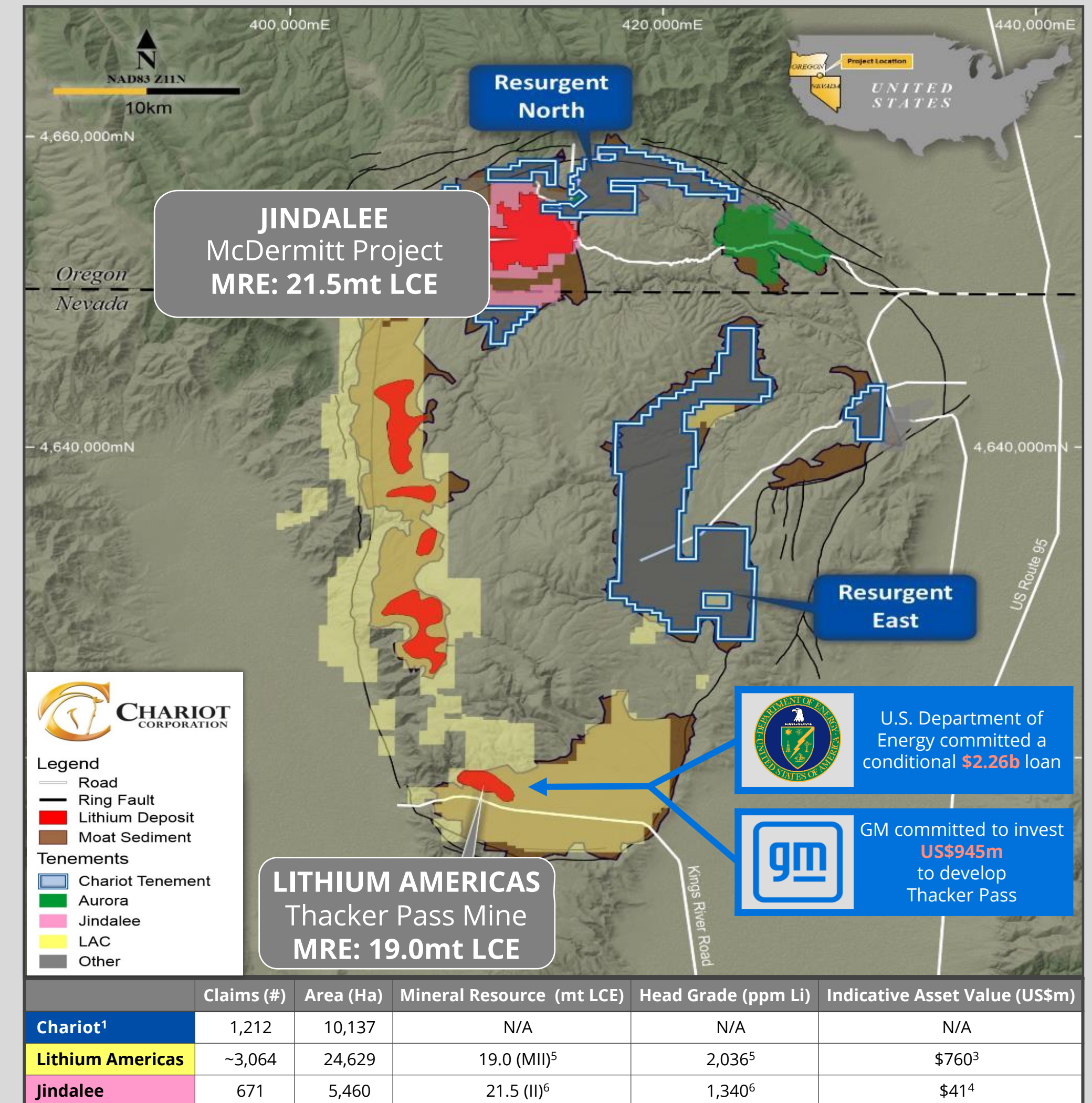
- The Resurgent Project is a claystone-hosted lithium project located in the McDermitt Caldera in Oregon and Nevada, U.S.A.
- The lithium deposits in the Caldera occur in ancient lake sediments that surround the centre of the caldera
- The Resurgent Project comprises 1,212 claims
- McDermitt Caldera hosts the two largest lithium mineral resources discovered to-date in the United States

Selected Surface Assay Results²

Sample ID	ppm Li	Sample ID	ppm Li
679862	3,865	340673	2,089
679860	3,836	340652	1,883
340655	3,471	340667	1,679
679859	3,164	679858	1,650
679861	2,838	340752	1,645
679856	2,672	340663	1,538
461038	2,638	679885	1,526
340653	2,442	340654	1,418
340664	2,381	679937	1,122

Notes:

- 1) Chariot holds a 79.4% beneficial interest in FMSL, which owns 100% of the Resurgent Project.
- 2) FMSL collected 289 surface samples at the Resurgent Project, with 20 samples assaying >1,000 ppm Li and a best assay result of 3,865 ppm Li. Typical mineral resource estimate cut-off grade for claystone lithium is 1,000 ppm Li. Refer to Independent Technical Assessment Report (Resurgent Project) in Chariot's Prospectus dated 23 August 2023 for the full list of assay results.
- 3) Based on Lithium Americas Corp. market capitalisation. Source: S&P Capital IQ accessed 8 October 2024.
- 4) Based on Jindalee Lithium Limited market capitalisation. Source: S&P Capital IQ accessed 8 October 2024.
- 5) Lithium Americas Corporation's (NYSE: LAC) (LAC) Thacker Pass Deposit contains a total NI43-101 Measured (7.0Mt), Indicated (9.1Mt), and Inferred (3.0Mt) Mineral Resource of 19.1Mt LCE at a 1,047 ppm Li cut-off grade ("COG"). Refer to Lithium Americas Thacker Pass Feasibility Study NI43-101 dated 2 November 2022.
- 6) Jindalee's McDermitt Project which contains a total JORC (2012) Indicated (11.1Mt) and Inferred (10.4Mt) Mineral Resource of 21.5Mt of Lithium Carbonate Equivalent (LCE) at a 1,000 ppm Li COG. Refer to Jindalee Resources Limited company announcement 27 February 2023.



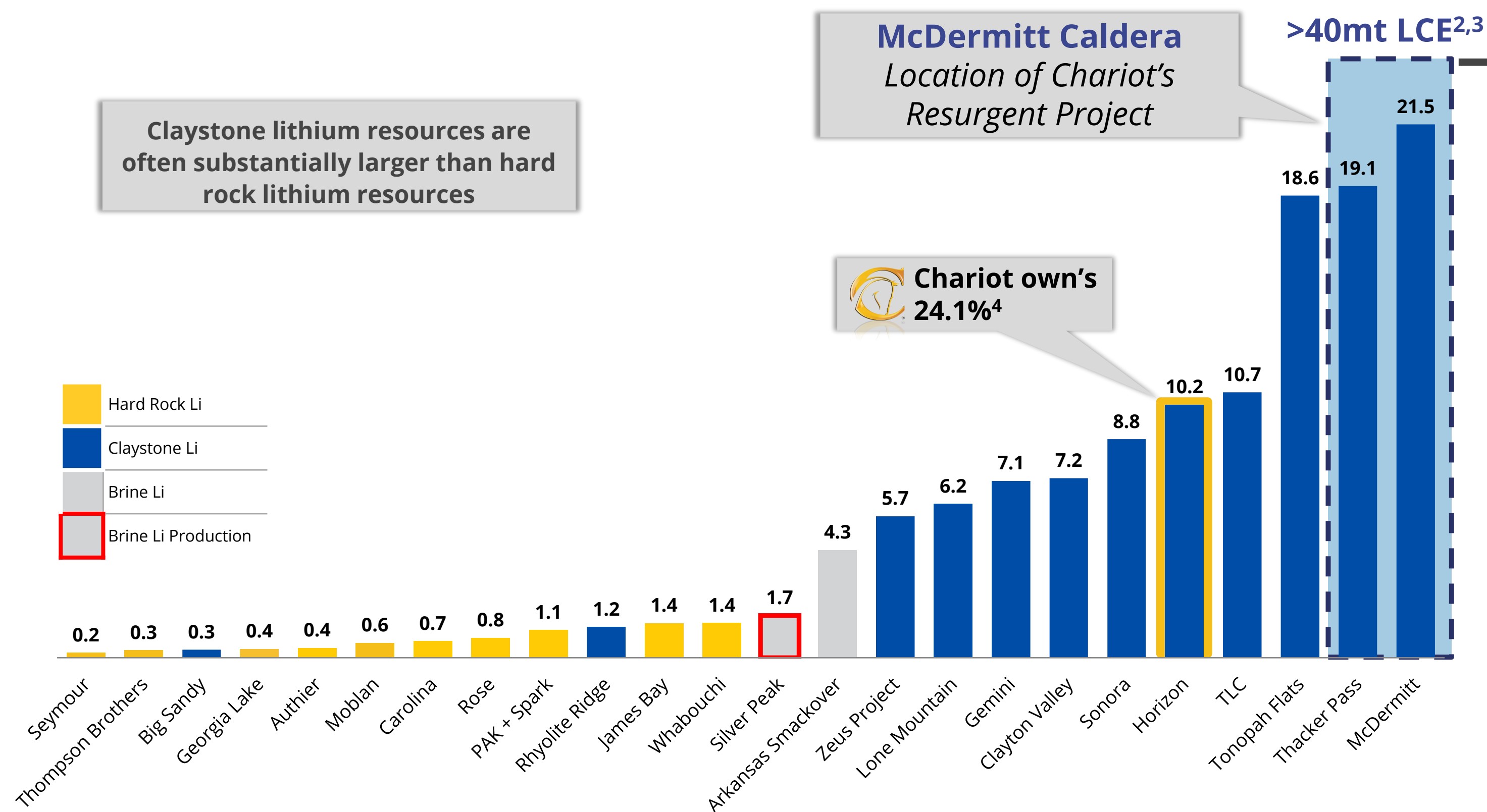
Disclaimer: The Company notes that details of neighbouring projects are included for information purposes only and is not an indication of the prospectivity of the geology of the Company's projects.



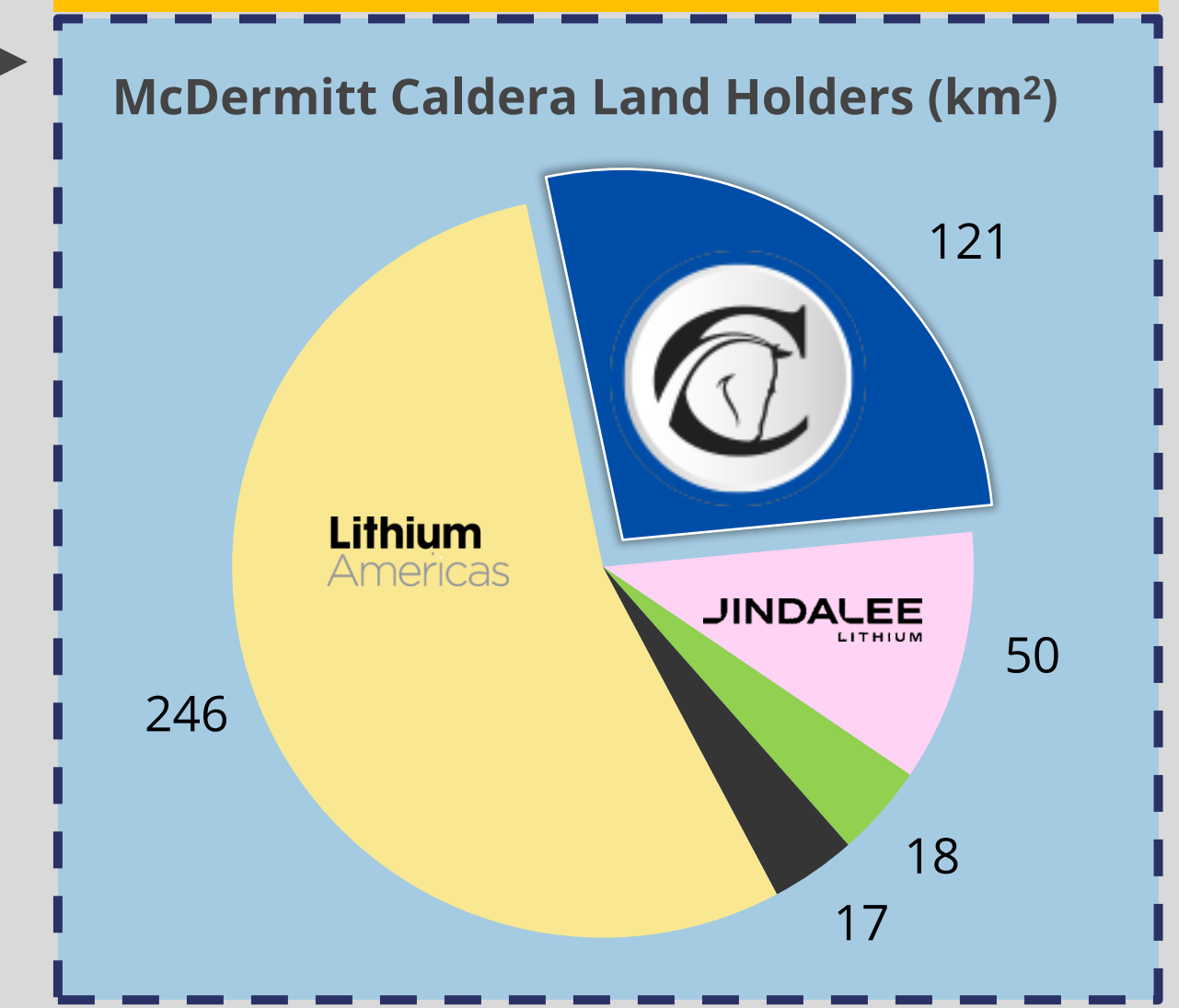
Claystone: Potentially the Future of Large-Scale Lithium Supply¹

Lithium Projects in North America

by Measured, Indicated & Inferred Mineral Resource (Mt LCE)



! Chariot holds the second-largest land position in the McDermitt Caldera, which hosts the largest lithium mineral resource in the U.S.



Notes:

- 1) Bar chart is illustrative.
- 2) Lithium Americas Corporation's (NYSE: LAC) (LAC) Thacker Pass deposit contains a total NI43-101 Measured (7.0Mt), Indicated (9.1Mt), and Inferred (3.0Mt) Mineral Resource of 19.1Mt LCE at a 1,047 ppm Li COG. Refer to Lithium Americas Thacker Pass Feasibility Study NI43-101 dated 2 November 2022.
- 3) Jindalee's McDermitt Project contains a total JORC (2012) Indicated (11.1Mt) and Inferred (10.4Mt) Mineral Resource of 21.5Mt of Lithium Carbonate Equivalent (LCE) at a 1,000 ppm Li COG. Refer to Jindalee Lithium Limited company announcement 27 February 2023.
- 4) Chariot owns 24.1% of Mustang Lithium LLC which wholly owns the Horizon project through its 100% interest in Horizon Lithium LLC.

Resurgent North

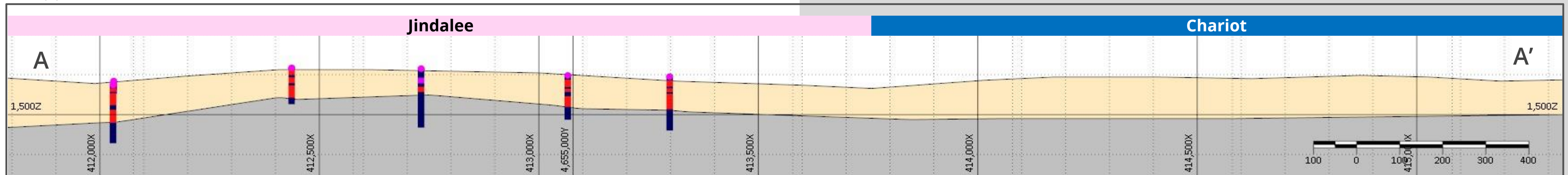
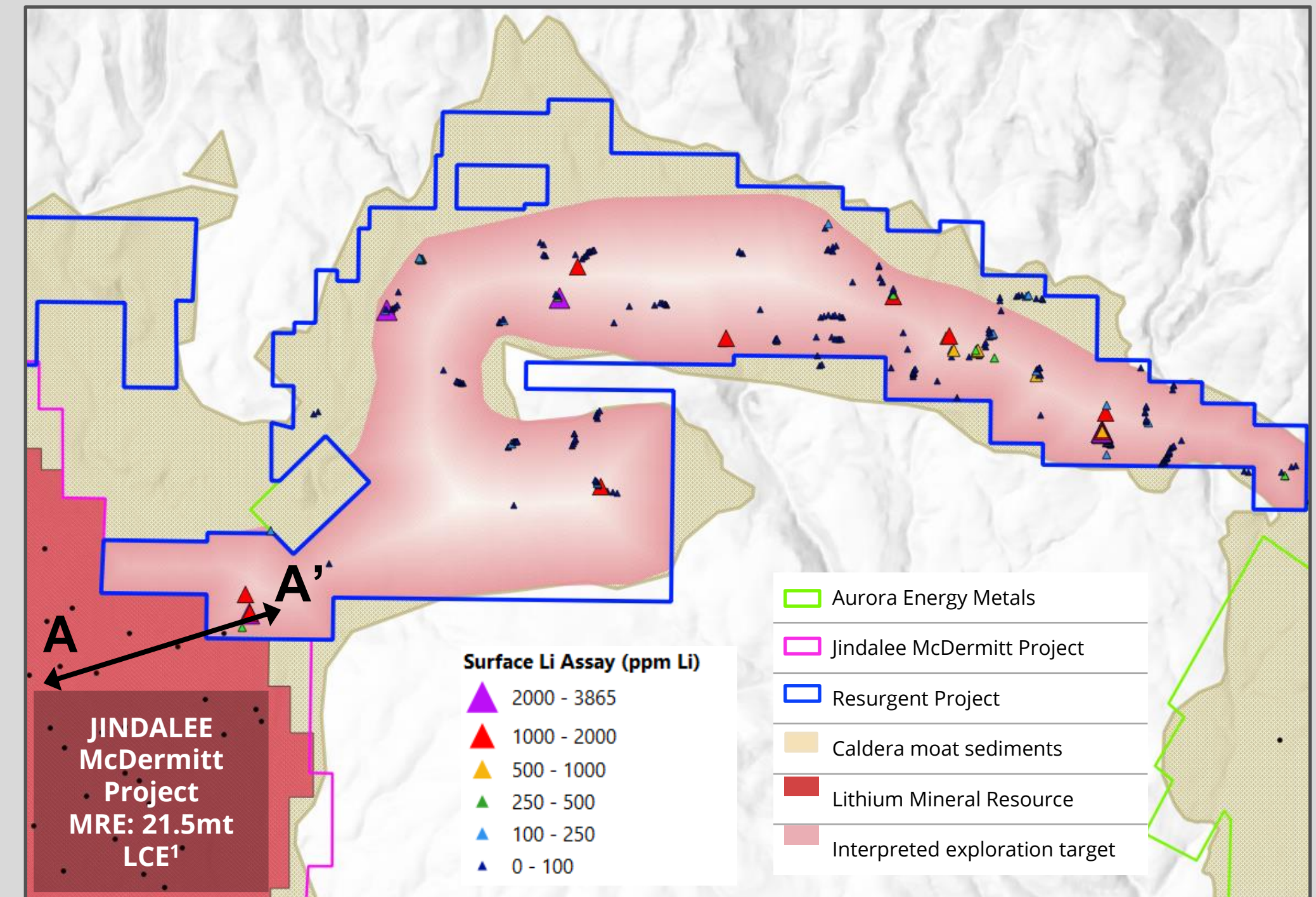


Overview

- Believed to share the same sedimentary units that host Jindalee’s McDermitt project (ASX: JRL) with a JORC MRE of 21.5 mt LCE¹
- Resurgent North abuts Jindalee’s McDermitt project and follows the same stratigraphic sequence – based on rock-chip results
- A surface sampling campaign of 289 samples was conducted in 2021 at Resurgent North. 70 samples returned values of greater than 100 ppm Li, 20 samples returned values greater than 1,000ppm Li and 10 samples returned values **greater than 2,000 ppm Li²**
- **Highest surface sample assayed at 3,865 ppm Li (over 3x typical lithium claystone MRE cut-off grade)³**

Exploration Plan

- Additional soils sampling programme across the Project
- Drill target planning
- NOI approved, awaiting Oregon Department of Geology and Mineral Industries approval



Notes:

- 1) Jindalee Lithium Limited company announcement 27 February 2023.
- 2) Refer to Independent Technical Assessment Report (Resurgent Project) in Chariot’s Prospectus dated 23 August 2023 for the full list of assays results.
- 3) Jindalee Lithium Limited McDermitt Project applies a Mineral Resource COG of >1,000 ppm Li. Refer to Jindalee Lithium Limited company announcement 27 February 2023.

Resurgent East

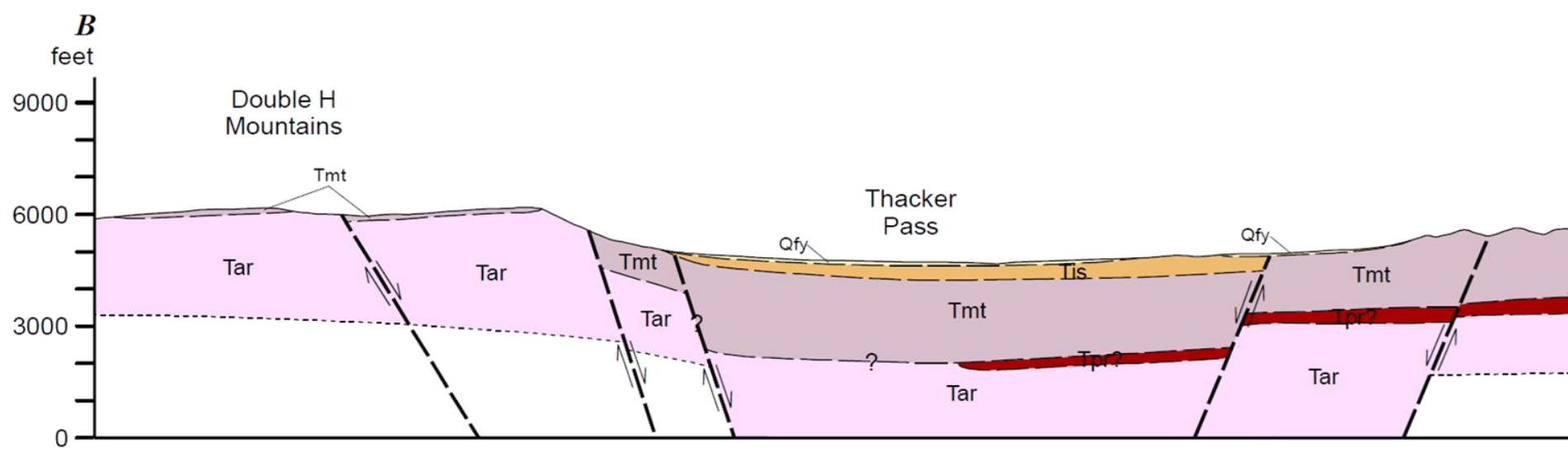
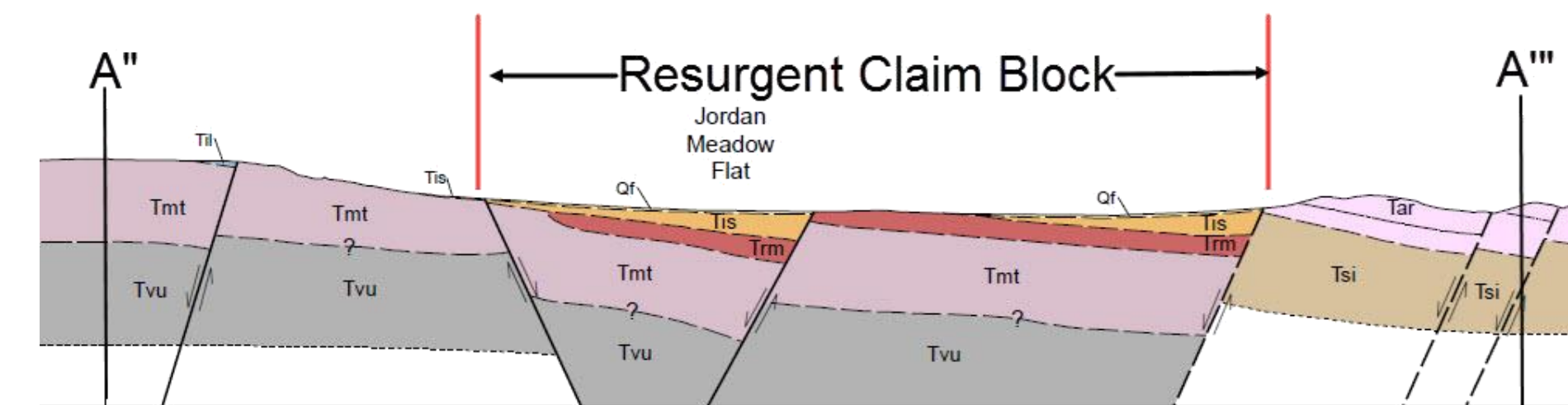


Overview

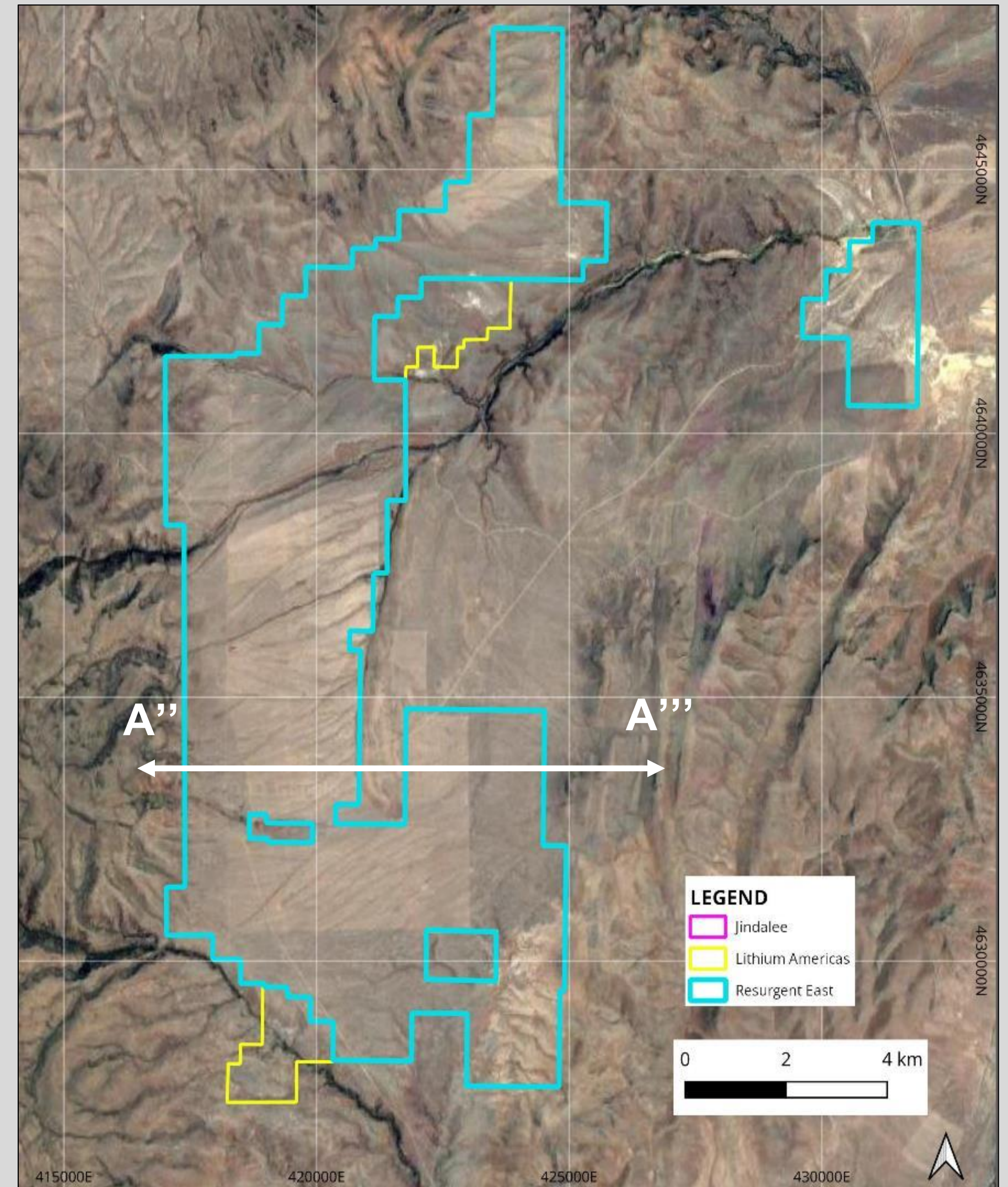
- Resurgent East claims target the same sedimentary units that host the Thacker Pass lithium deposit (MRE: 19.1mt LCE) and it is hoped that exploration results will establish analogous mineralisation
- Thacker Pass stratigraphy features a low-grade zone (~25-30m thick < 4,000 ppm Li) overlaying a high-grade zone (~25-30m thick > 4,000 ppm Li)¹

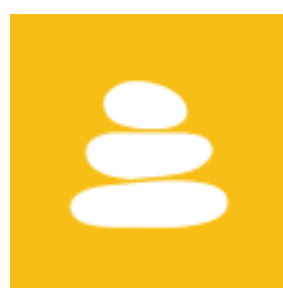
Exploration Plan

- A soil and rock chip program focused on aerial mapped sub crop with the aim of testing through the gravel cover
- Drilling target planning



Note:
1) Refer to the Independent Technical Assessment Report (Resurgent Project) in the Chariot Prospectus dated 23 August 2023 for further details





Mustang Lithium LLC

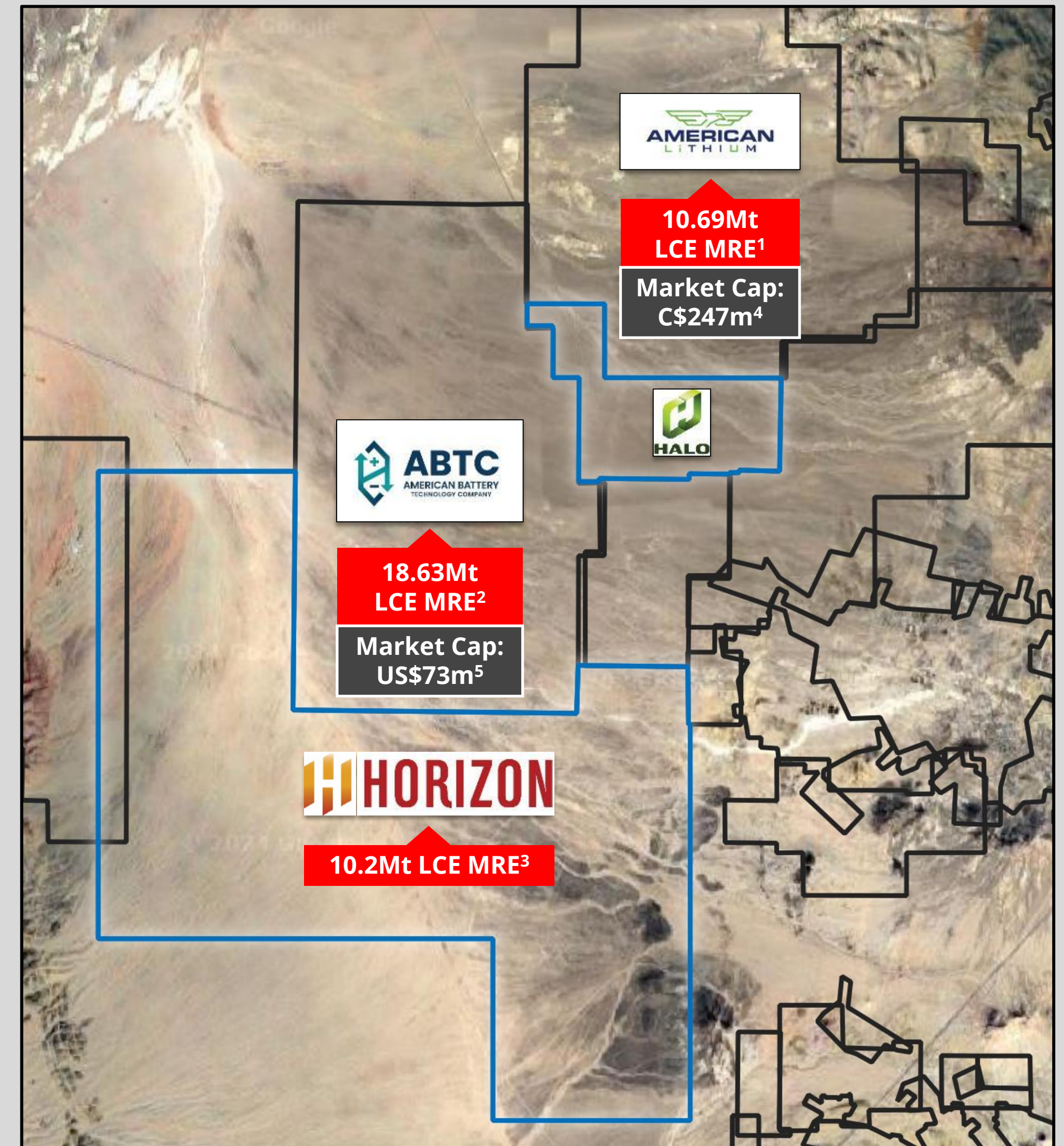
Horizon & Halo Lithium Projects

Overview

- The Horizon Lithium Project and Halo Lithium Project, together, consist of 937 mineral claims over 19,358 acres in Tonopah, Nevada, USA
- The projects neighbour American Lithium Corp.'s (TSX-V: LI) TLC project (**MRE 10.69 Mt LCE¹**) and American Battery Technology Company's (NASDAQ: ABAT) Tonopah Flats project (**MRE 18.63 Mt LCE²**)
- Maiden mineral resource estimate of **1.3 million tonnes LCE indicated** and **8.8 million tonnes LCE inferred** at Horizon³
- Significant upside remains for resource expansion and definition
- Suitable for low-cost and sustainable mining methods
- Access to great infrastructure – highways, electrical, rail and gas
- Well positioned to benefit from strong federal and state government support

Notes:

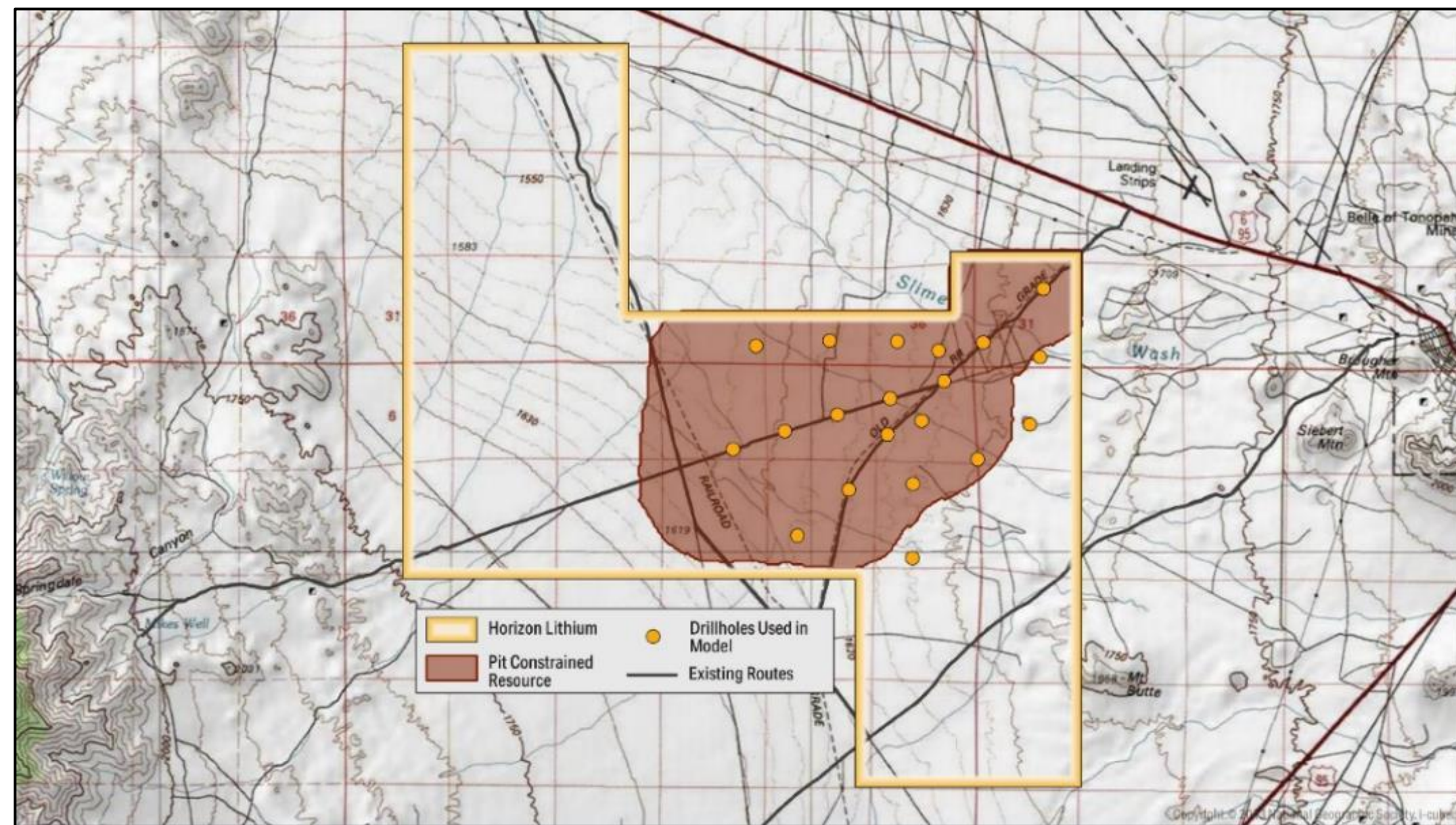
- 1) Consisting of a measured resource estimate of 860 Mt @ 924 ppm Li, an indicated resource estimate of 1,192 Mt @ 727 ppm Li and an inferred resource estimate of 486 Mt @ 713 ppm Li, using a cut-off of 500 ppm Li, prepared in conformity with CIM "Estimation of Mineral Resource and Mineral Reserves Best Practices" guidelines and is reported in accordance with the Canadian Securities Administrators NI 43-101. Announced on 16 January 2023 by American Lithium Corp.
- 2) Consisting of a measured resource estimate of 721 Mt @ 702 ppm Li, an indicated resource estimate of 2,439 Mt @ 565 ppm Li and an inferred resource estimate of 2,931 Mt @ 550 ppm Li, using a cut-off grade of 300 ppm Li in accordance with the SEC S-K 1300 New Mining Disclosure Rule. Announced on 18 January 2024 by American Battery Technology Company.
- 3) Pan American Energy Corp. announced a maiden Mineral Resource estimate on 20 November 2023. On 4 January 2024, Pan American Energy filed a technical report pursuant to National Instrument 43-101 – Standards of Disclosure for Mineral Projects ("NI 43-101") entitled "NI 43-101 Technical Report for the Horizon Lithium Project" with an effective date of December 21, 2023. Neither Chariot nor Mustang Lithium LLC has independently verified the information relating to the Horizon NI 43-101 Mineral Resource Estimate.
- 4) Market capitalization as of 15/10/2024
- 5) Market capitalization as of 15/10/2024



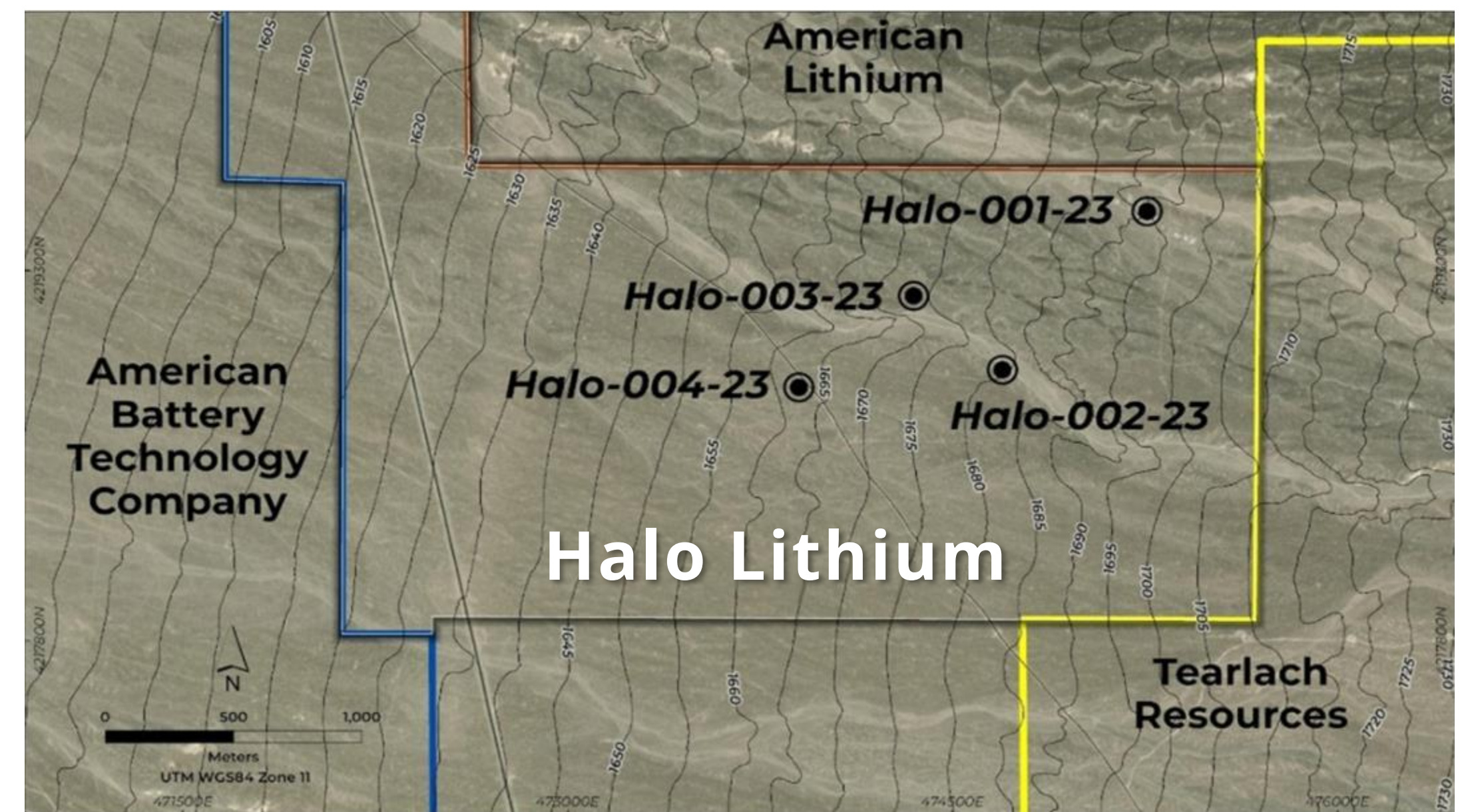
Horizon & Halo Lithium Projects



Horizon Project: Exploration History and results



Halo Project: Exploration History and results



Classification	Cut-off (ppm Li)	Total (K-tonnes)	Average Grade Lithium (ppm)	Lithium (K-tonnes)	LCE (K-tonnes)
Indicated	300	372,845	669	249	1,325
Inferred	300	2,453,963	680	1,668	8,879

Hole No.	From (m)	To (m)	Width (m)	Li (ppm)
Halo-001-23	57.05	95.25	38.23	938
Halo-002-23	212.09	232.34	20.25	1,026
Halo-003-23	179.81	242.01	62.2	994
Halo-004-23	224.33	244.14	19.81	1,368

Notes:
 1) Neither Chariot nor Mustang Lithium LLC has independently verified the information relating to the Horizon NI 43-101 Mineral Resource Estimate as published by Pan American Energy Corp. or the exploration results as published by POWR Lithium Corp.

ESG Commitment

Driving the Future of American-Made Clean Energy with Sustainable Domestic Lithium



Environmental

- As the U.S. accelerates its transition to electric vehicles, our lithium exploration projects play a critical role in supporting domestic supply chains for EV battery production.
- Ensure regulatory compliance as a minimum
- Committed to restoration and rehabilitation of all project sites



Social

- Partnering with local communities, creating jobs and supporting local economies in the rural U.S.
- Supporting the strong move to 'American Made' electric vehicles in the U.S. and helping the U.S. achieve energy independence by sourcing lithium domestically.
- Implementing and maintaining top-tier health and safety standard for employees and business partners.



Governance

- Ensuring compliance with U.S. federal and state regulations on exploration and environmental protection.
- Best practice corporate governance standards and business ethics



Important Notice

Any material used in this presentation is only an overview and summary of certain data selected by the management of Chariot Corporation Ltd ("Chariot").

The presentation does not purport to contain all the information that a prospective investor may require in evaluating a possible investment in Chariot and should not be used in isolation as a basis to invest in Chariot. Recipients of this presentation must make their own independent investigations, consideration and evaluation of Chariot.

The information contained in this presentation is not investment or financial product advice and is not intended to be used as the basis for making an investment decision. Please note that, in providing this presentation, Chariot has not considered the objectives, financial position or needs of any particular recipient. The information contained in this presentation is not a substitute for detailed investigation or analysis of any particular issue and does not purport to be all of the information that a person would need to make an assessment of Chariot or its assets. Chariot recommends that potential investors consult their professional advisor/s as an investment in Chariot is considered to be speculative in nature.

Statements in this presentation are current only as of the date of this presentation and the information in this presentation remains subject to change without notice. Reliance should not be placed on information or opinions contained in this presentation.



To the maximum extent permitted by law, Chariot disclaims any responsibility to inform any recipient of this presentation on any matter that subsequently comes to its notice which may affect any of the information contained in this document and presentation and undertakes no obligation to provide any additional or updated information whether as a result of new information, future events or results or otherwise.

No representation or warranty, express or implied, is made as to the fairness, accuracy, completeness or correctness of the information, opinions or conclusions contained in or derived from this presentation or any omission from this presentation or of any other written or oral information or opinions provided now or in the future to any person.

To the maximum extent permitted by law, neither Chariot nor any affiliates, related bodies corporate and their respective officers, directors, employees, advisors and agents, nor any other person, accepts any liability as to or in relation to the accuracy or completeness of the information, statements, opinions or matters (express or implied) arising out of, contained in, or derived from this presentation or any omission from this presentation or of any other written or oral information or opinions provided now or in the future to any person.

The information contained in this presentation is for information purposes only and does not comprise a prospectus, product disclosure statement or other offering document under Australian law. This presentation also does not constitute or form part of any invitation, offer for sale or subscription or any solicitation for any offer to buy or subscribe for any securities nor shall they or any part of them form the basis of or be relied upon in connection therewith or act as any inducement to enter into any contract or commitment with respect to securities of Chariot.

The information in this presentation relating to exploration results and exploration targets has been previously reported in accordance with the 2012 Edition of the 'Australasian Code for Reporting of Exploration results, Mineral Resources and Ore

Reserves' (JORC Code). Chariot confirms that it is not aware of any new information as at the date of this presentation that materially affects the information included in this presentation and that all material assumptions and technical parameters underpinning the estimates continue to apply and have not materially changed.

This presentation includes "forward looking statements" within the meaning of securities laws of applicable jurisdictions. Forward looking statements can generally be identified by the use of the words "anticipate", "believe", "expect", "project", "forecast", "estimate", "likely", "intend", "should", "could", "may", "target", "plan" "guidance" and other similar expressions. Indications of, and guidance on, future earnings or dividends and financial position and performance are also forward-looking statements. Such forward-looking statements are not guarantees of future performance and involve known and unknown risks, uncertainties and other factors, many of which are beyond the control of Chariot and its officers, employees, agents or associates, that may cause actual results to differ materially from those expressed or implied in such statement. Actual results, performance or achievements may vary materially from any projections and forward looking statements and the assumptions on which those statements are based. Readers are cautioned not to place undue reliance on forward looking statements and Chariot assumes no obligation to update such information. Cautionary Statement on Visual Estimates: Visual estimates of mineral abundance should never be considered a proxy for laboratory analysis where concentrations or grades are the factor of principal economic interest. Visual estimates also potentially provide no information regarding impurities or deleterious physical properties relevant to valuations.

By receiving this presentation, you acknowledge and represent to the Company that you have read, understood and accepted the terms of this disclaimer. It is the responsibility of all recipients of this presentation to obtain all necessary approvals to receive this presentation and receipt of this presentation will be taken by the Company to constitute a representation and warranty that all relevant approvals have been obtained.

